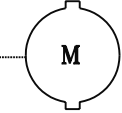
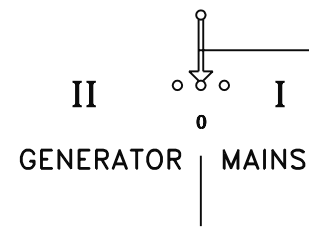
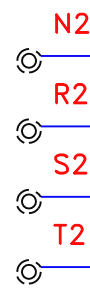


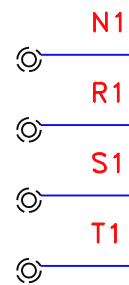
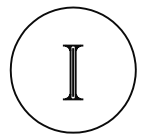
M: changheover switch
230Vac



INPUT
GENERATOR
3ph
230V



INPUT
MAINS
3ph
230V



R2 [2_3]

S2

R1

S1

T1

[2_3]

N3

R3

S3

T3

LOAD
3ph
230V

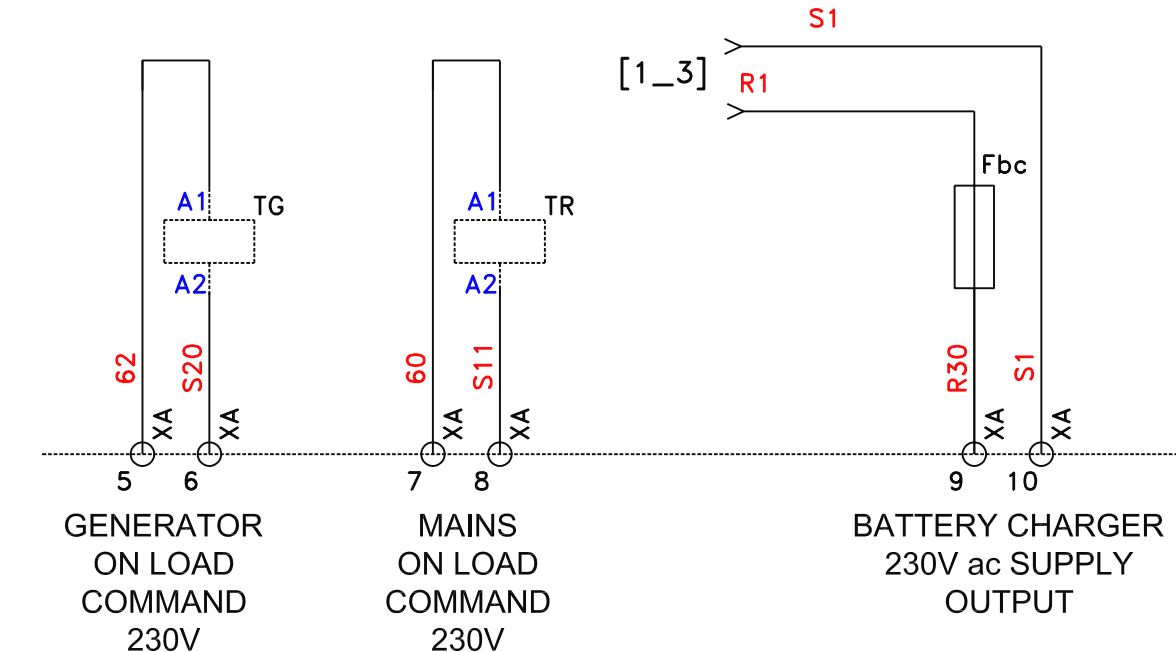
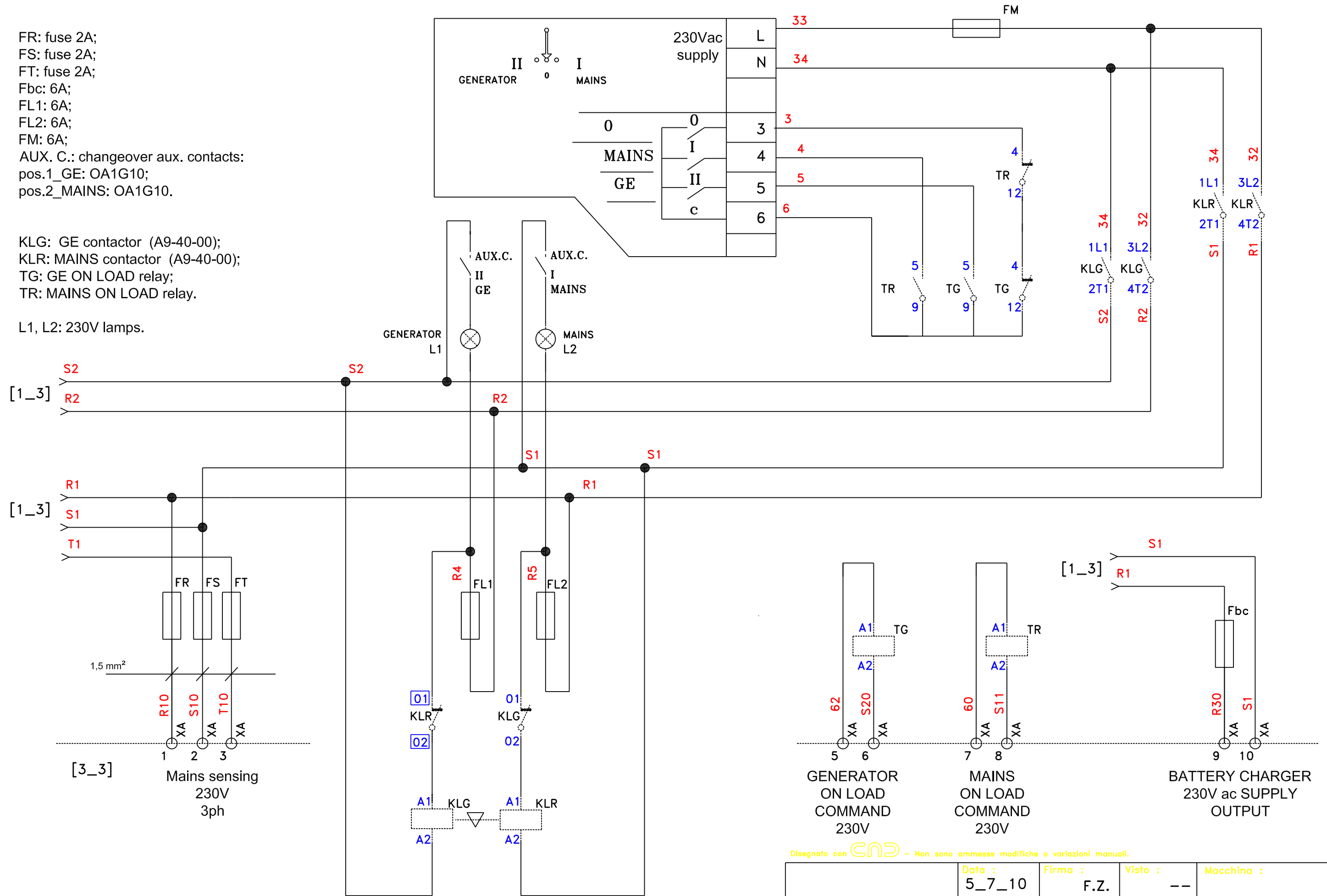
Disegnato con **CAD** - Non sono ammesse modifiche o variazioni manuali.

	Data :	Firma :	Visto :	Macchina :
	5_7_10	F.Z.	--	
Descrizione :			Disegno N. :	Indice
dis.: 34224			SE-V-0000044 1_3	

FR: fuse 2A;
 FS: fuse 2A;
 FT: fuse 2A;
 Fbc: 6A;
 FL1: 6A;
 FL2: 6A;
 FM: 6A;
 AUX. C.: changeover aux. contacts:
 pos.1_GE: OA1G10;
 pos.2_MAINS: OA1G10.

KLK: GE contactor (A9-40-00);
 KLR: MAINS contactor (A9-40-00);
 TG: GE ON LOAD relay;
 TR: MAINS ON LOAD relay.

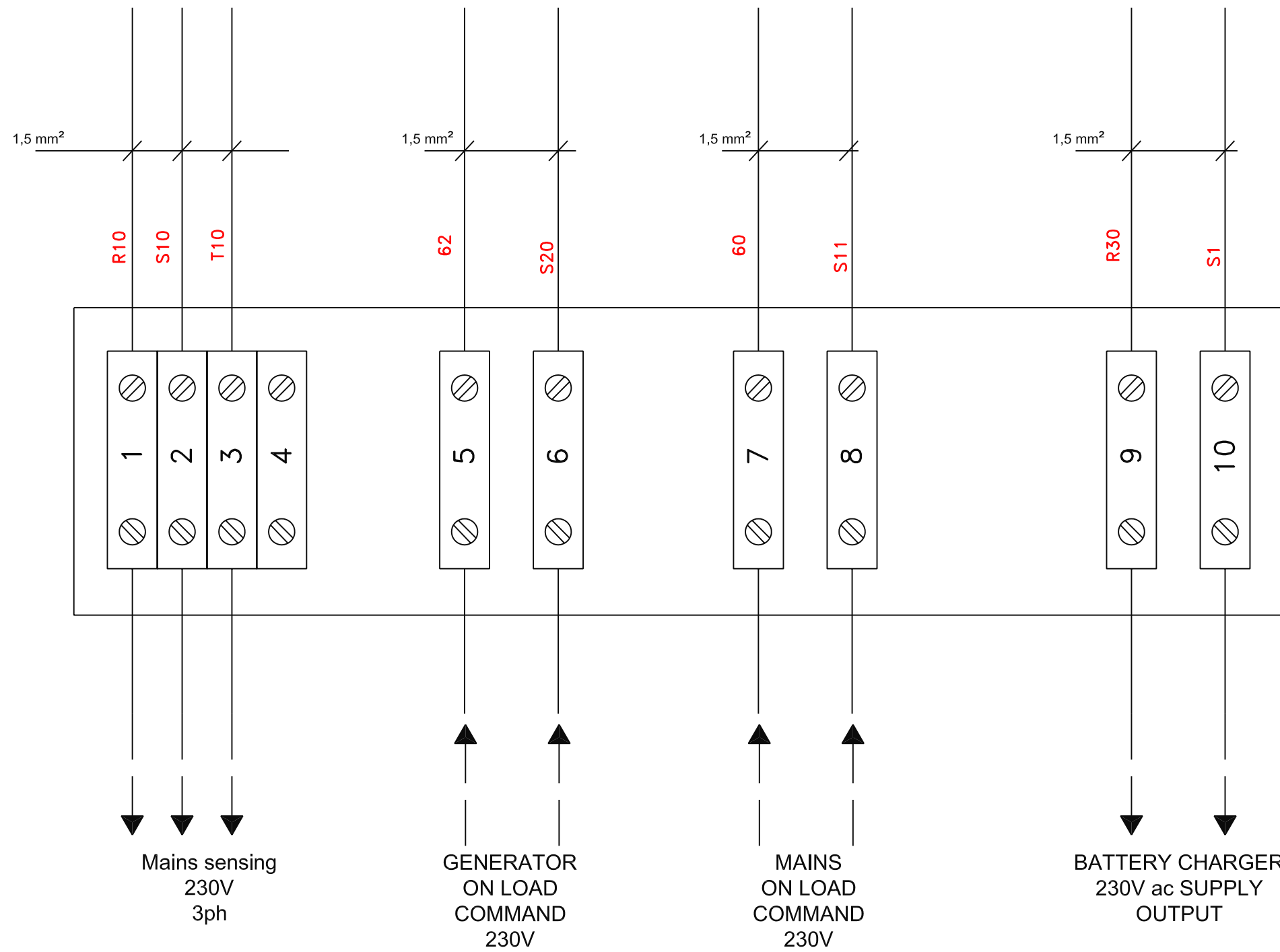
L1, L2: 230V lamps.



Disegnato con **CAD** - Non sono ammesse modifiche o variazioni manuali.

Data :	5_7_10	Firma :	F.Z.	Visto :	--	Macchina :	
Descrizione :	dis.: 34224			Disegno N. :	SE-V-00000044		Indice
						2_3	

**XA:
ATS control
terminal board**



Disegnato con **CAD** - Non sono ammesse modifiche o variazioni manuali.

	Data :	Firma :	Visto :	Macchina :
	5_7_10	F.Z.	--	
Descrizione :			Disegno N. :	Indice
dis.: 34224			SE-V-0000044 3_3	