

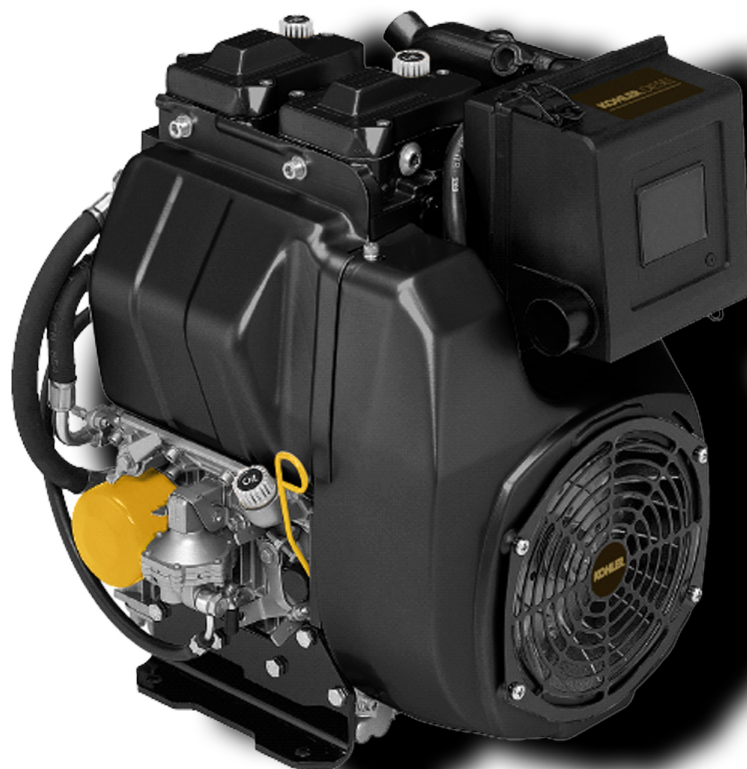
---

# ED6C3160

---

## Spare Parts Catalogue

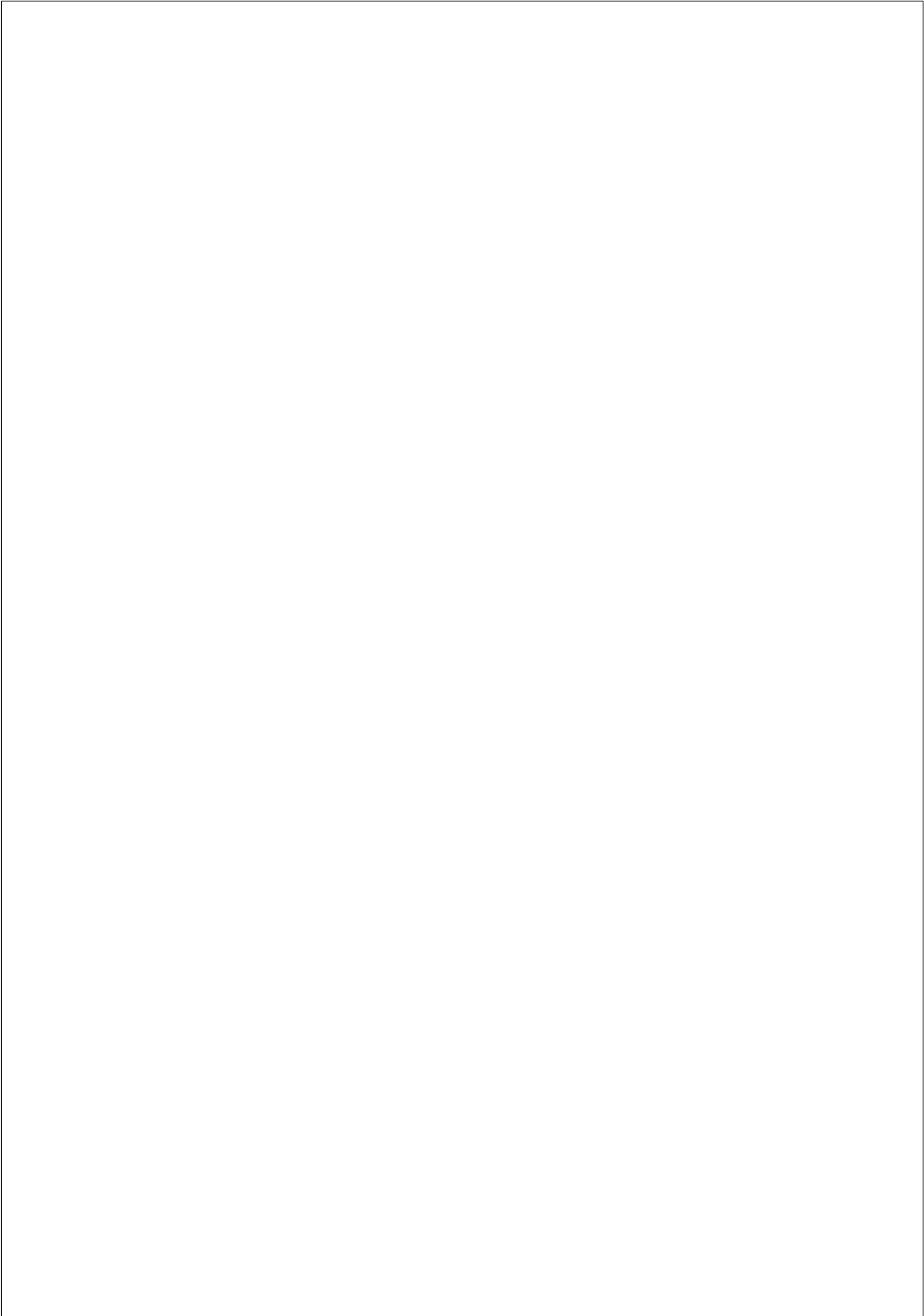
---



## 25LD425-2

**Update Date 30/05/2016**



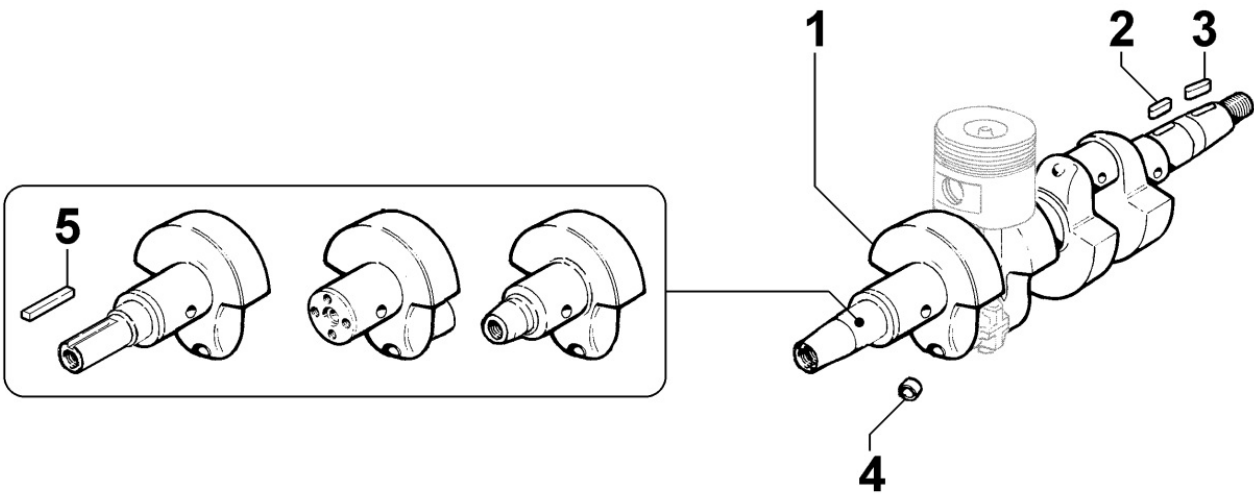


## Tavola ricambi

Index	Description
8010250300	CRANKSHAFT
8011250150	PISTON / CONNECTING ROD
8012250420	FLYWHEEL
8020250230	CRANKCASE
8021251320	CYLINDER HEAD
8022250010	HEAD COVER
8023250010	FLYWHEEL SIDE SUPPORT
8024250010	CRANKCASE COVER
8025250020	ENGINE MOUNTS
8026250020	CRANKSHAFT CENTRAL SUPPORT
8030250030	INJECTION SYSTEM
8035250030	CAMSHAFT
8038250010	TIMING GEAR
8040250010	OIL PUMP
8041250040	OIL PAN
8042250100	OIL FILTER
8043250010	OIL DIPSTICK
8044250010	OIL PRESSURE VALVE
8045250020	BREATHER SYSTEM
8050250180	SPEED GOVERNOR
8051250110	CONTROLS
8062250180	FUEL FEED PUMP
8063250370	FUEL TANK
8064250030	FUEL PIPING
8070250020	AIR SHROUD
8072250030	COOLING PLATES
8078250080	OIL RADIATOR / OIL COOLER
8080250110	AIR INLET MANIFOLD / AIR FILTER
8081250390	AIR CLEANER
8085250170	EXHAUST GAS MANIFOLD
8100250420	VOLTAGE ALTERNATOR
8101250030	STARTING MOTOR
8102250070	OIL PRESSURE SWITCH
8110250040	STARTING
8170250100	FLYWHEEL PROTECTION
8176250020	MUFFLER GUARD

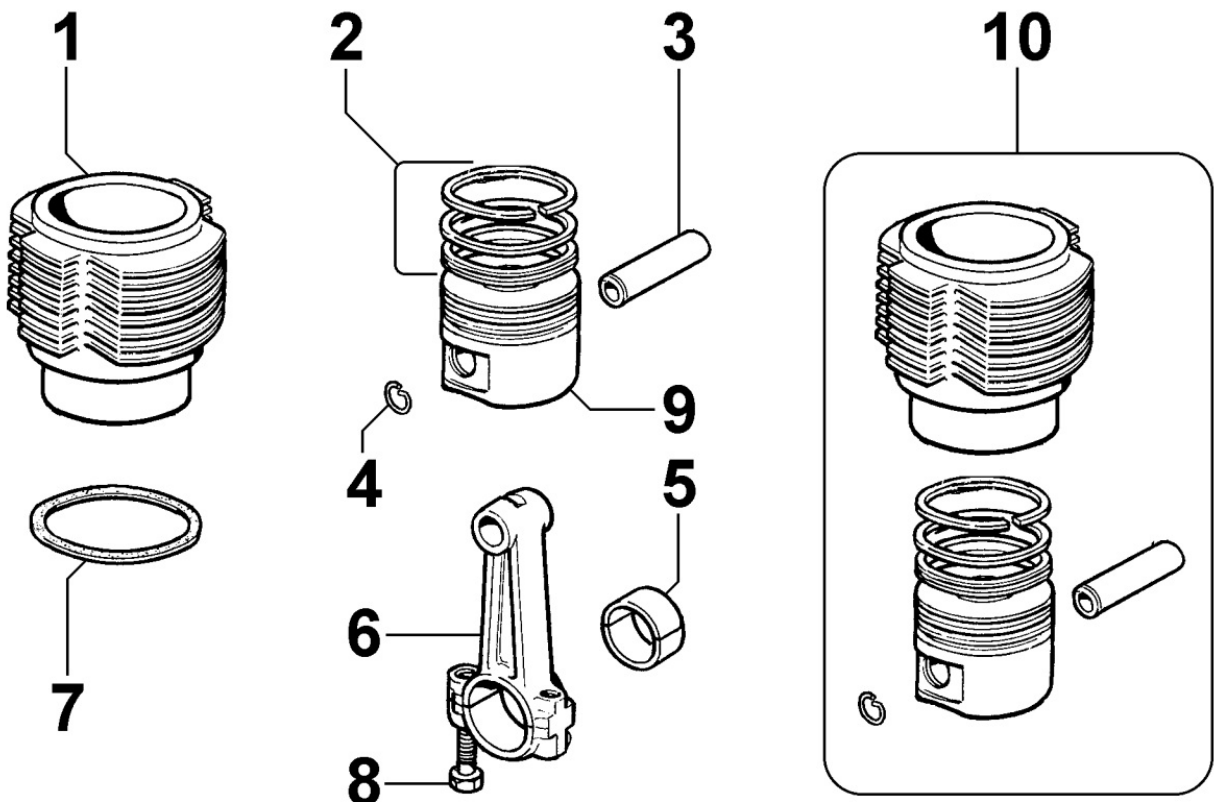


8010250300 - CRANKSHAFT



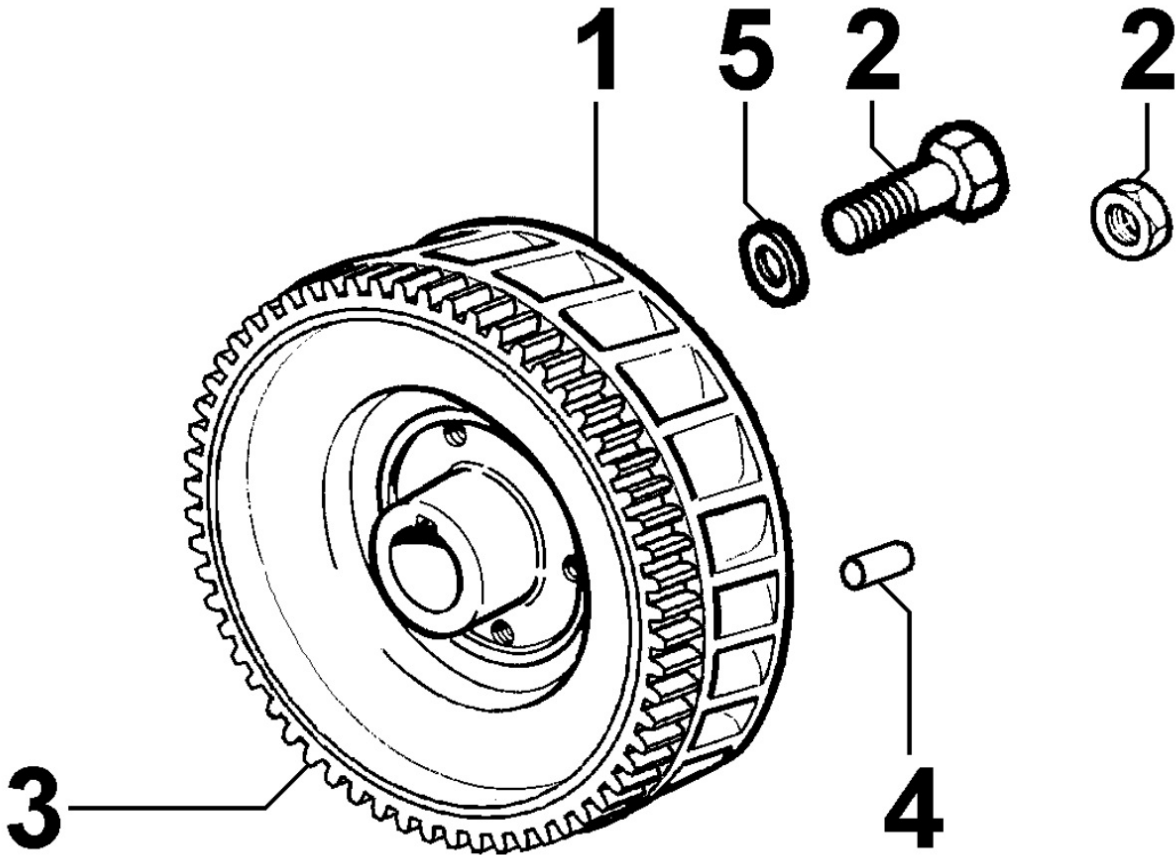
Pos	Kit	Included In	Code	Description	Qty	Old Code	Tech. Info
1	(A)		ED00A23R0160-S	CRANKSHAFT	1		
2		(A)	ED00498R0350-S	KEY	2		
4		(A) (B)	ED0089900520-S	TAPPO/PLUG N 10	4		


8011250150 - PISTON / CONNECTING ROD



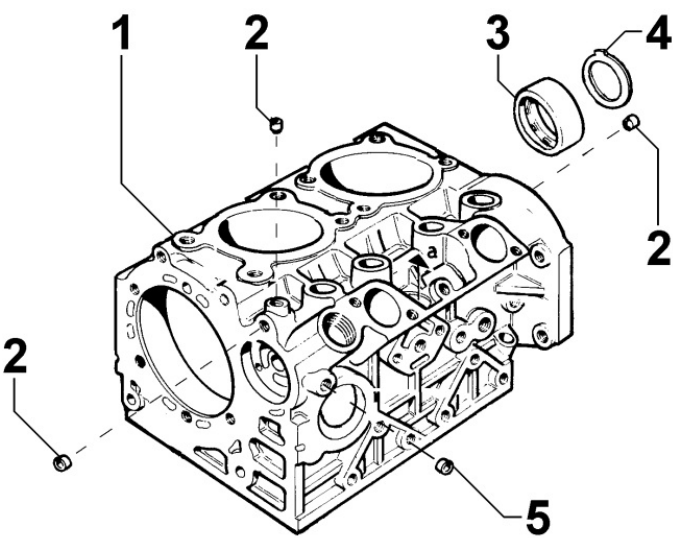
Pos	Kit	Included In	Code	Description	Qty	Old Code	Tech. Info
1		(C)	ED00204R0470-S	CYLINDER EPA	2		
2		(A)	ED00A26R0650-S	PISTON RINGS	2		
3		(A) (C)	ED00854R0170-S	PISTON PIN	2		
4		(A) (C)	ED0011600530-S	STOPRING	4		
5			ED00A26R0400-S	SLIDING BEARING	2	ED00316R0780-S	
5			ED00A26R0370-S	SLIDING BEARING	2	ED00316R0750-S	
5			ED00A26R0410-S	SLIDING BEARING	2	ED00316R0790-S	
6	(B)		ED00100R0450-S	CONNECTING ROD	2		
7			ED00451R0730-S	GASKET	2		
7			ED00451R0740-S	GASKET	2		
8		(B)	ED0017701010-S	BOLT	2		
9	(A)		ED0065022200-S	PISTON	2		
10	(C)		ED0048980450-S	ASS.Y	2		

8012250420 - FLYWHEEL



Pos	Kit	Included In	Code	Description	Qty	Old Code	Tech. Info
1	(A)		ED0098814770-S	FLYWHEEL	1		
2			ED00325R0840-S	NUT	1		
3		(A)	ED00256R0140-S	STARTING GEAR	1		

8020250230 - CRANKCASE



- 6

SERIE COMPLETA ANELLI E GUARNIZIONI  
JEU DE BAGUES ET JOINTS  
GASKET AND O-RING SET  
DICHTUNG-O-RINGSATZ  
SERIE DE JUNTAS Y DE AROS

25LD330-2  
MD150  
MD151
- 7

SERIE COMPLETA ANELLI E GUARNIZIONI  
JEU DE BAGUES ET JOINTS  
GASKET AND O-RING SET  
DICHTUNG-O-RINGSATZ  
SERIE DE JUNTAS Y DE AROS

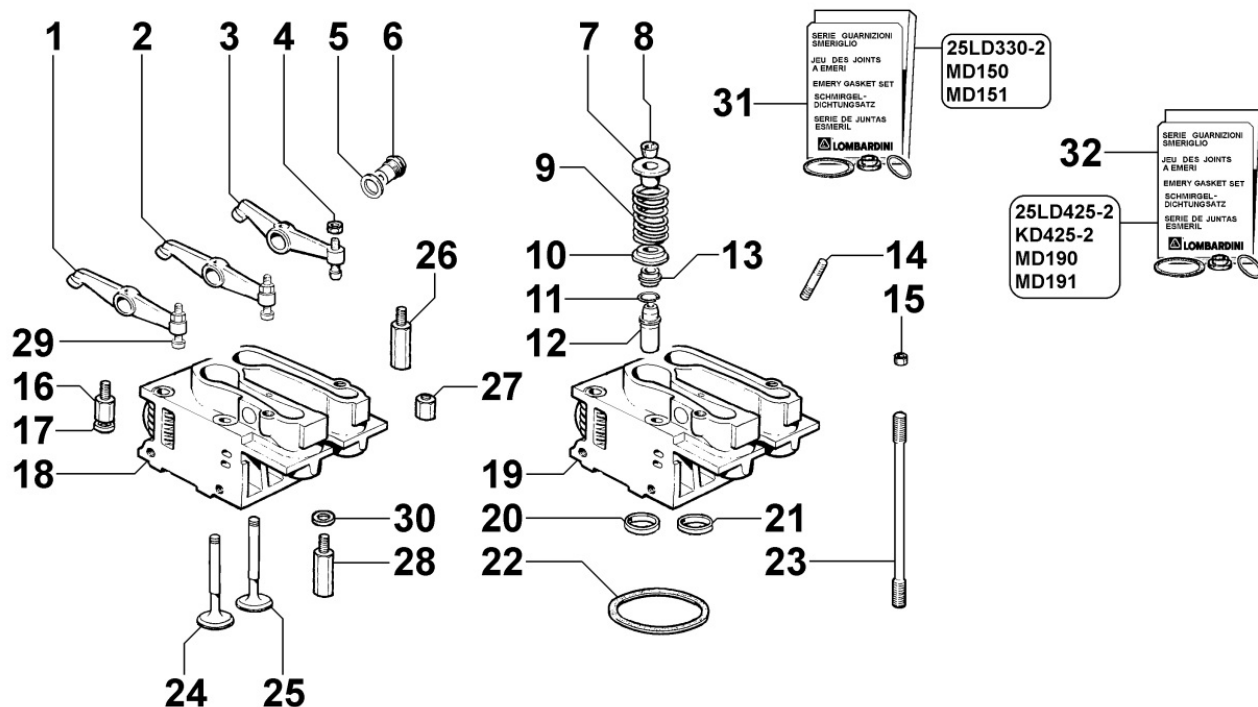
25LD425-2  
KD425-2  
MD190  
MD191
- 8

SERIE COMPLETA ANELLI E GUARNIZIONI  
JEU DE BAGUES ET JOINTS  
GASKET AND O-RING SET  
DICHTUNG-O-RINGSATZ  
SERIE DE JUNTAS Y DE AROS

25LD425-2 EPA  
KD425-2 EPA  
MD190 EPA  
MD191 EPA

Pos	Kit	Included In	Code	Description	Qty	Old Code	Tech. Info
1	(A)		ED0015112070-S	CRANKCASE	1		
2		(A)	ED0089900580-S	PLUG	4		
3			ED00310R0810-S	SLIDING BEARING	1		
3			ED00310R0800-S	SLIDING BEARING	1		
3		(A)	ED00310R0770-S	SLIDING BEARING	1		
6			ED00A21R0420-S	GASKET SET	1		
7			ED00A22R0910-S	GASKET SET	1		
8			ED00A26R0670-S	GASKET SET EPA	1		

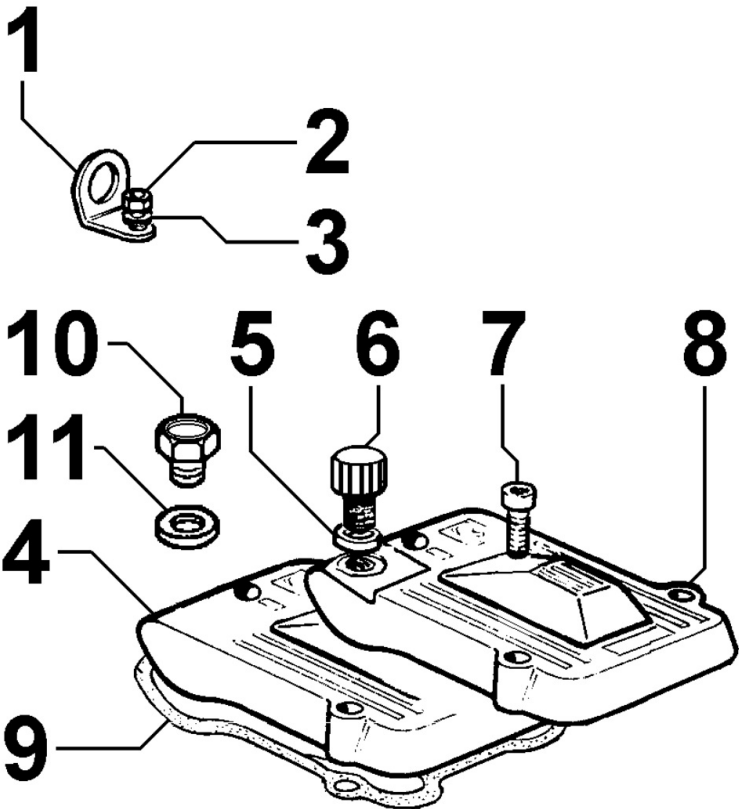
## 8021251320 - CYLINDER HEAD




Pos	Kit	Included In	Code	Description	Qty	Old Code	Tech. Info
2	(D)	(B)	ED0015413180-S	INTAKE ROCKER ARM	2		⚠
3	(D)	(B)	ED0015413190-S	EXHAUST ROCKER ARM	2		⚠
5		(B)	ED0046700880-S	GASKET	4		
6		(B)	ED00602R0030-S	PIN	4		
7		(B)	ED0064001010-S	RETAINER	4		
8		(B)	ED00809R0040-S	LOCK	8		
9		(B)	ED00540R0770-S	SPRING	4		
10		(B)	ED0064000980-S	RETAINER	4		
11		(C)	ED00059R0680-S	RING	4		
12	(C)	(E)	ED00464R0740-S	VALVE GUIDE	4		⚠
13		(A) (B)	ED0045350150-S	VALVE STEM SEAL d.7	4		
14		(B)	ED00676R0880-S	STUD	2		
15			ED00326R0380-S	NUT	5		
16			ED00326R0410-S	NUT	1		
17			ED00772R0020-S	WASHER	8		
19	(E)		ED00A26R0630-S	CYLINDER HEAD	2	ED0092011780-S	
20		(A) (B) (E)	ED00060R0940-S	RING EPA	2		⚠
21		(A) (B) (E)	ED00060R0950-S	RING EPA	2		⚠
22			ED0047308940-S	GASKET	1		⚠
22			ED0047308920-S	GASKET	1		⚠
22			ED0047308930-S	GASKET	1		⚠
22			ED0047308910-S	HEAD GASKET	1		⚠
23			ED00684R0340-S	STUD BOLT	8		
24		(B)	ED00960R0890-S	VALVE EPA	2		⚠
25		(B)	ED00960R0880-S	VALVE EPA	2		⚠
28			ED00326R0500-S	DADO/NUT	2		
29		(A) (B) (D)	ED0098501590-S	ADJUSTING SCREW M6	4		⚠

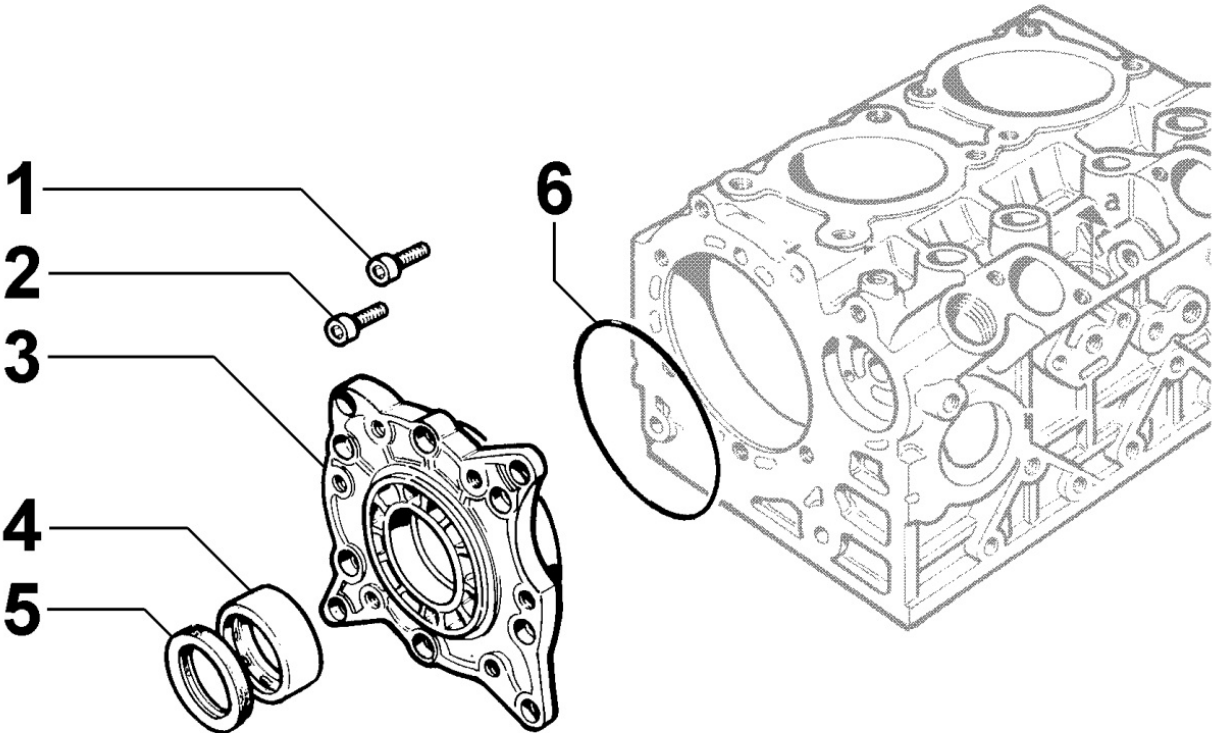
Date	Time	Location	Weather	Temperature (°C)	Humidity (%)	Wind Speed (km/h)	Wind Direction	Pressure (hPa)	Visibility (km)	Clouds (%)	Precipitation (mm)	Soil Moisture (%)	Plant Growth (%)	Animal Activity	Human Activity	Notes
2023-10-27	06:00	Field Station	Clear	15.0	65	5	N	1013.2	10	10	0.0	15	10	Low	None	Start of day observations
2023-10-27	07:00	Field Station	Clear	16.5	60	8	N	1013.5	10	10	0.0	15	10	Low	None	Continued observations
2023-10-27	08:00	Field Station	Clear	18.0	55	12	N	1013.8	10	10	0.0	15	10	Low	None	Continued observations
2023-10-27	09:00	Field Station	Clear	19.5	50	15	N	1014.0	10	10	0.0	15	10	Low	None	Continued observations
2023-10-27	10:00	Field Station	Clear	21.0	45	18	N	1014.2	10	10	0.0	15	10	Low	None	Continued observations
2023-10-27	11:00	Field Station	Clear	22.5	40	20	N	1014.5	10	10	0.0	15	10	Low	None	Continued observations
2023-10-27	12:00	Field Station	Clear	24.0	35	22	N	1014.8	10	10	0.0	15	10	Low	None	Continued observations
2023-10-27	13:00	Field Station	Clear	25.5	30	25	N	1015.0	10	10	0.0	15	10	Low	None	Continued observations
2023-10-27	14:00	Field Station	Clear	27.0	25	28	N	1015.2	10	10	0.0	15	10	Low	None	Continued observations
2023-10-27	15:00	Field Station	Clear	28.5	20	30	N	1015.5	10	10	0.0	15	10	Low	None	Continued observations
2023-10-27	16:00	Field Station	Clear	30.0	15	32	N	1015.8	10	10	0.0	15	10	Low	None	Continued observations
2023-10-27	17:00	Field Station	Clear	31.5	10	35	N	1016.0	10	10	0.0	15	10	Low	None	Continued observations
2023-10-27	18:00	Field Station	Clear	33.0	5	38	N	1016.2	10	10	0.0	15	10	Low	None	Continued observations
2023-10-27	19:00	Field Station	Clear	34.5	0	40	N	1016.5	10	10	0.0	15	10	Low	None	Continued observations
2023-10-27	20:00	Field Station	Clear	36.0	0	42	N	1016.8	10	10	0.0	15	10	Low	None	Continued observations
2023-10-27	21:00	Field Station	Clear	37.5	0	45	N	1017.0	10	10	0.0	15	10	Low	None	Continued observations
2023-10-27	22:00	Field Station	Clear	39.0	0	48	N	1017.2	10	10	0.0	15	10	Low	None	Continued observations
2023-10-27	23:00	Field Station	Clear	40.5	0	50	N	1017.5	10	10	0.0	15	10	Low	None	Continued observations
2023-10-28	00:00	Field Station	Clear	42.0	0	52	N	1017.8	10	10	0.0	15	10	Low	None	Continued observations
2023-10-28	01:00	Field Station	Clear	43.5	0	55	N	1018.0	10	10	0.0	15	10	Low	None	Continued observations
2023-10-28	02:00	Field Station	Clear	45.0	0	58	N	1018.2	10	10	0.0	15	10	Low	None	Continued observations
2023-10-28	03:00	Field Station	Clear	46.5	0	60	N	1018.5	10	10	0.0	15	10	Low	None	Continued observations
2023-10-28	04:00	Field Station	Clear	48.0	0	62	N	1018.8	10	10	0.0	15	10	Low	None	Continued observations
2023-10-28	05:00	Field Station	Clear	49.5	0	65	N	1019.0	10	10	0.0	15	10	Low	None	Continued observations
2023-10-28	06:00	Field Station	Clear	51.0	0	68	N	1019.2	10	10	0.0	15	10	Low	None	Continued observations
2023-10-28	07:00	Field Station	Clear	52.5	0	70	N	1019.5	10	10	0.0	15	10	Low	None	Continued observations
2023-10-28	08:00	Field Station	Clear	54.0	0	72	N	1019.8	10	10	0.0	15	10	Low	None	Continued observations
2023-10-28	09:00	Field Station	Clear	55.5	0	75	N	1020.0	10	10	0.0	15	10	Low	None	Continued observations
2023-10-28	10:00	Field Station	Clear	57.0	0	78	N	1020.2	10	10	0.0	15	10	Low	None	Continued observations
2023-10-28	11:00	Field Station	Clear	58.5	0	80	N	1020.5	10	10	0.0	15	10	Low	None	Continued observations
2023-10-28	12:00	Field Station	Clear	60.0	0	82	N	1020.8	10	10	0.0	15	10	Low	None	Continued observations
2023-10-28	13:00	Field Station	Clear	61.5	0	85	N	1021.0	10	10	0.0	15	10	Low	None	Continued observations
2023-10-28	14:00	Field Station	Clear	63.0	0	88	N	1021.2	10	10	0.0	15	10	Low	None	Continued observations
2023-10-28	15:00	Field Station	Clear	64.5	0	90	N	1021.5	10	10	0.0	15	10	Low	None	Continued observations
2023-10-28	16:00	Field Station	Clear	66.0	0	92	N	1021.8	10	10	0.0	15	10	Low	None	Continued observations
2023-10-28	17:00	Field Station	Clear	67.5	0	95	N	1022.0	10	10	0.0	15	10	Low	None	Continued observations
2023-10-28	18:00	Field Station	Clear	69.0	0	98	N	1022.2	10	10	0.0	15	10	Low	None	Continued observations
2023-10-28	19:00	Field Station	Clear	70.5	0	100	N	1022.5	10	10	0.0	15	10	Low	None	Continued observations
2023-10-28	20:00	Field Station	Clear	72.0	0	100	N	1022.8	10	10	0.0	15	10	Low	None	Continued observations
2023-10-28	21:00	Field Station	Clear	73.5	0	100	N	1023.0	10	10	0.0	15	10	Low	None	Continued observations
2023-10-28	22:00	Field Station	Clear	75.0	0	100	N	1023.2	10	10	0.0	15	10	Low	None	Continued observations
2023-10-28	23:00	Field Station	Clear	76.5	0	100	N	1023.5	10	10	0.0	15	10	Low	None	Continued observations
2023-10-29	00:00	Field Station	Clear	78.0	0	100	N	1023.8	10	10	0.0	15	10	Low	None	Continued observations
2023-10-29	01:00	Field Station	Clear	79.5	0	100	N	1024.0	10	10	0.0	15	10	Low	None	Continued observations
2023-10-29	02:00	Field Station	Clear	81.0	0	100	N	1024.2	10	10	0.0	15	10	Low	None	Continued observations
2023-10-29	03:00	Field Station	Clear	82.5	0	100	N	1024.5	10	10	0.0	15	10	Low	None	Continued observations
2023-10-29	04:00	Field Station	Clear	84.0	0	100	N	1024.8	10	10	0.0	15	10	Low	None	Continued observations
2023-10-29	05:00	Field Station	Clear	85.5	0	100	N	1025.0	10	10	0.0	15	10	Low	None	Continued observations
2023-10-29	06:00	Field Station	Clear	87.0	0	100	N	1025.2	10	10	0.0	15	10	Low	None	Continued observations
2023-10-29	07:00	Field Station	Clear	88.5	0	100	N	1025.5	10	10	0.0	15	10	Low	None	Continued observations
2023-10-29	08:00	Field Station	Clear	90.0	0	100	N	1025.8	10	10	0.0	15	10	Low	None	Continued observations
2023-10-29	09:00	Field Station	Clear	91.5	0	100	N	1026.0	10	10	0.0	15	10	Low	None	Continued observations
2023-10-29	10:00	Field Station	Clear	93.0	0	100	N	1026.2	10	10	0.0	15	10	Low	None	Continued observations
2023-10-29	11:00	Field Station	Clear	94.5	0	100	N	1026.5	10	10	0.0	15	10	Low	None	Continued observations
2023-10-29	12:00	Field Station	Clear	96.0	0	100	N	1026.8	10	10	0.0	15	10	Low	None	Continued observations
2023-10-29	13:00	Field Station	Clear	97.5	0	100	N	1027.0	10	10	0.0	15	10	Low	None	Continued observations
2023-10-29	14:00	Field Station	Clear	99.0	0	100	N	1027.2	10	10	0.0	15	10	Low	None	Continued observations
2023-10-29	15:00	Field Station	Clear	100.0	0	100	N	1027.5	10	10	0.0	15	10	Low	None	Continued observations
2023-10-29	16:00	Field Station	Clear	101.5	0	100	N	1027.8	10	10	0.0	15	10	Low	None	Continued observations
2023-10-29	17:00	Field Station	Clear	103.0	0	100	N	1028.0	10	10	0.0	15	10	Low	None	Continued observations
2023-10-29	18:00	Field Station	Clear	104.5	0	100	N	1028.2	10	10	0.0	15	10	Low	None	Continued observations
2023-10-29	19:00	Field Station	Clear	106.0	0	100	N	1028.5	10	10	0.0	15	10	Low	None	Continued observations
2023-10-29	20:00	Field Station	Clear	107.5	0	100	N	1028.8	10	10	0.0	15	10	Low	None	Continued observations
2023-10-29	21:00	Field Station	Clear	109.0	0	100	N	1029.0	10	10	0.0	15	10	Low	None	Continued observations
2023-10-29	22:00	Field Station	Clear	110.5	0	100	N	1029.2	10	10	0.0	15	10	Low	None	Continued observations
2023-10-29	23:00	Field Station	Clear	112.0	0	100	N	1029.5	10	10	0.0	15	10	Low	None	Continued observations
2023-10-30	00:00	Field Station	Clear	113.5	0	100	N	1029.8	10	10	0.0	15	10	Low	None	Continued observations
2023-10-30	01:00	Field Station	Clear	115.0	0	100	N	1030.0	10	10	0.0	15	10	Low	None	Continued observations
2023-10-30	02:00	Field Station	Clear	116.5	0	100	N	1030.2	10	10	0.0	15	10	Low	None	Continued observations
2023-10-30	03:00	Field Station	Clear	118.0	0	100	N	1030.5	10	10	0.0	15	10	Low	None	Continued observations
2023-10-30	04:00	Field Station	Clear	119.5	0	100	N	1030.8	10	10	0.0	15	10	Low	None	Continued observations
2023-10-30	05:00	Field Station	Clear	121.0	0	100	N	1031.0	10	10	0.0	15	10	Low	None	Continued observations
2023-10-30	06:00	Field Station	Clear	122.5	0	100	N	1031.2	10	10	0.0	15	10	Low	None	Continued observations
2023-10-30	07:00	Field Station	Clear	124.0	0	100	N	1031.5	10	10	0.0	15	10	Low	None	Continued observations
2023-10-30	08:00	Field Station	Clear	125.5	0	100	N	1031.8	10	10	0.0	15	10	Low	None	Continued observations
2023-10-30	09:00	Field Station	Clear	127.0	0	100	N	1032.0	10	10	0.0	15	10	Low	None	Continued observations
2023-10-30	10:00	Field Station	Clear	128.5	0	100	N	1032.2	10	10	0.0	15	10	Low	None	Continued observations
2023-10-30	11:00	Field Station	Clear	130.0	0	100	N	1032.5	10	10	0.0	15	10	Low	None	Continued observations
2023-10-30	12:00	Field Station	Clear	131.5	0	100	N	1032.8	10	10	0.0	15	10	Low	None	Continued observations
2023-10-30	13:00	Field Station	Clear	133.0	0	100	N	1033.0	10	10	0.0	15	10	Low	None	Continued observations
2023-10-30	14:00	Field Station	Clear	134.5	0	100	N	1033.2	10	10	0.0	15	10	Low	None	Continued observations
2023-10-30	15:00	Field Station	Clear	136.0	0	100	N	1033.5	10	10	0.0	15	10	Low	None	Continued observations
2023-10-30	16:00	Field Station	Clear	137.5	0	100	N	1033.8	10	10	0.0	15	10	Low	None	Continued observations
2023-10-30	17:00	Field Station	Clear	139.0	0	100	N	1034.0	10	10	0.0	15	10	Low	None	Continued observations
2023-10-30	18:00	Field Station	Clear	140.5	0	100	N	1034.2	10	10	0.0	15	10	Low	None	Continued observations
2023-10-30	19:00	Field Station	Clear	142.0	0	100	N	1034.5	10	10	0.0	15	10	Low	None	Continued observations
2023-10-30	20:00	Field Station	Clear	143.5	0	100	N	1034.8	10	10	0.0	15	10	Low	None	Continued observations
2023-10-30	21:00	Field Station	Clear	145.0	0	100	N	1035.0	10	10	0.0	15	10	Low	None	Continued observations
2023-10-30	22:00	Field Station	Clear	146.5	0	100	N	1035.2	10	10	0.0	1				

8022250010 - HEAD COVER



Pos	Kit	Included In	Code	Description	Qty	Old Code	Tech. Info
1			ED0085060030-S	AN.BRACKET	1		
2			ED0032400160-S	HEX.NUT	1		
3			ED0076250120-S	WASHER	1		
4			ED00233R0820-S	COVER	1		
6			ED0090320950-S	FILLERPL.	1		
7			ED0097320780-S	SCREW	6		
8			ED00233R0840-S	COVER	1		
9			ED0044001410-S	GASKET ROCKER ARM COVER	2		
11			ED00758R0390-S	WASHER	1		

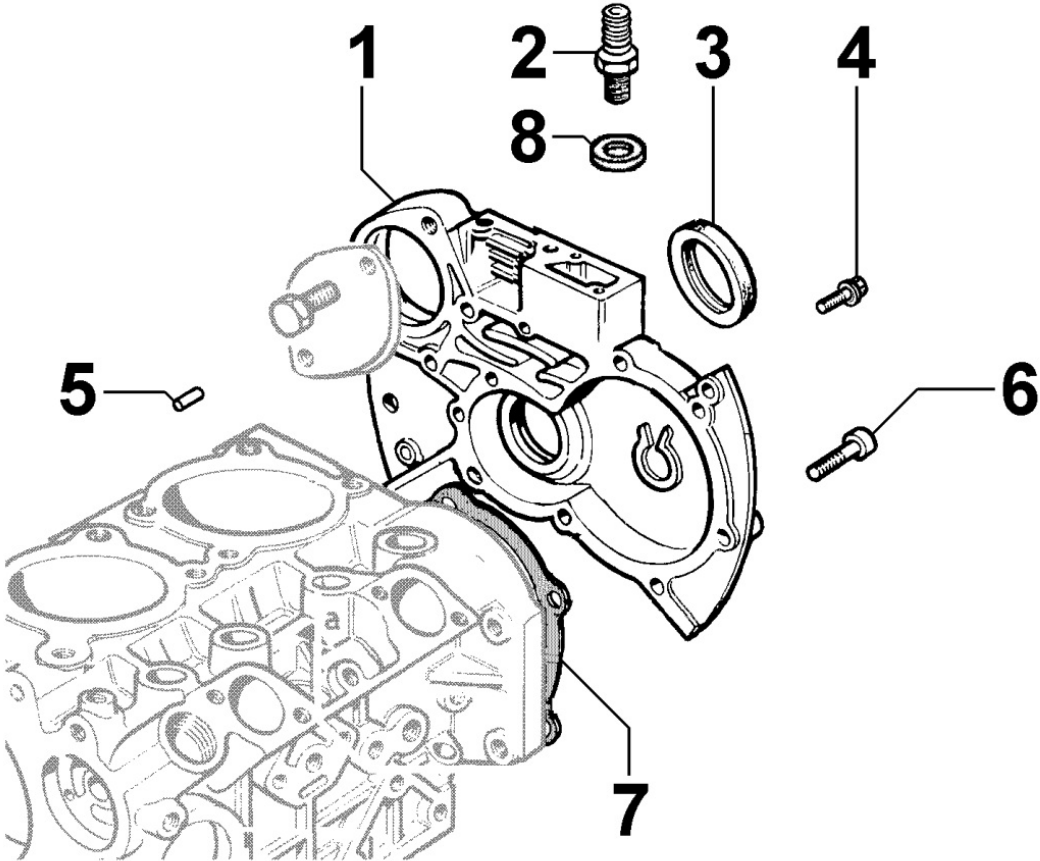
8023250010 - FLYWHEEL SIDE SUPPORT



Pos	Kit	Included In	Code	Description	Qty	Old Code	Tech. Info
1			ED0097320920-S	SCREW	2		
2			ED0097301180-S	SCREW	8		
3	(A)		ED0086753000-S	SUPPORT	1		
4			ED00310R0810-S	SLIDING BEARING	1		
4			ED00310R0800-S	SLIDING BEARING	1		
4		(A)	ED00310R0770-S	SLIDING BEARING	1		
5		(A)	ED00054R0170-S	SEALING OIL RING 45X60X7	1		
6			ED00579R0780-S	O-RING	1		

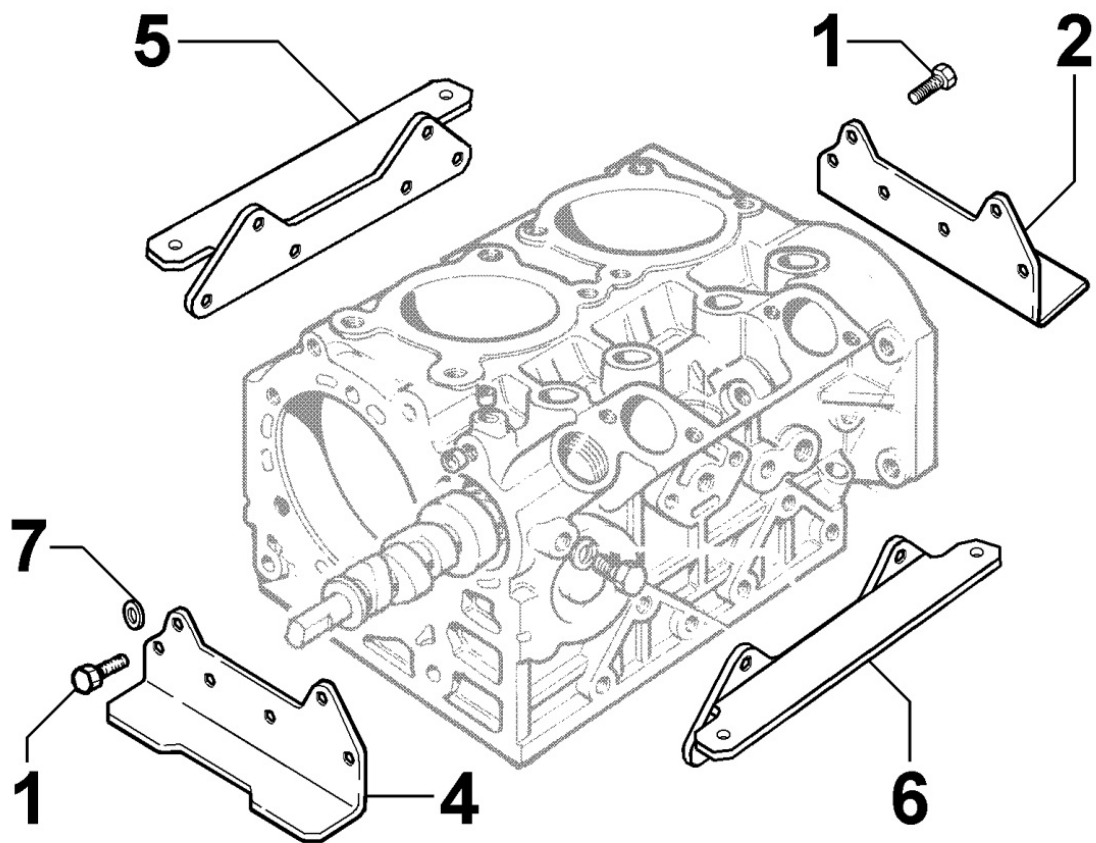


8024250010 - CRANKCASE COVER



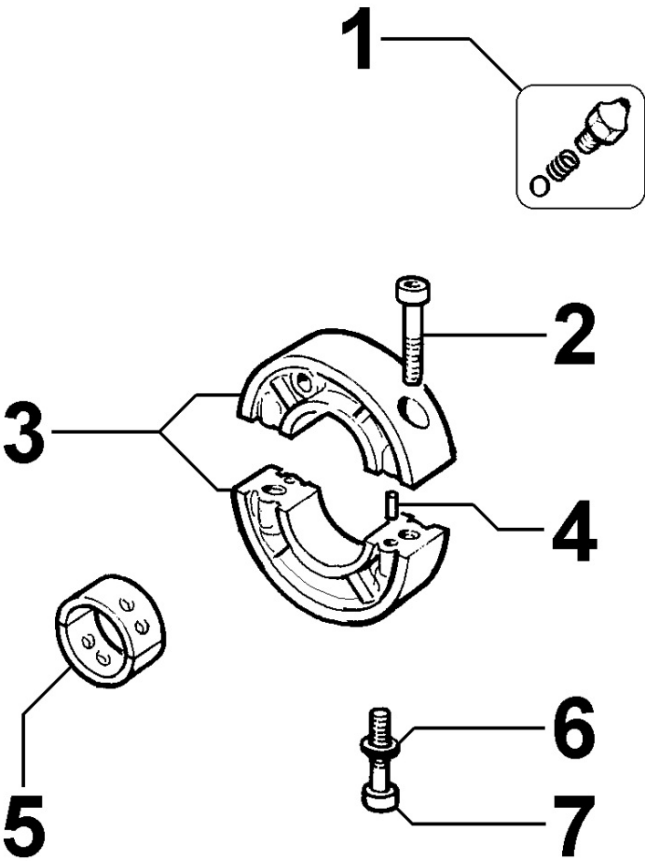
Pos	Kit	Included In	Code	Description	Qty	Old Code	Tech. Info
1	(A)		ED00241R0100-S	COVER FOR DISTRIBUTION MD/2 COMPLETE	1		
2		(A)	ED00717R0800-S	UNION	1		
3			ED00054R0310-S	ANELLO TEN.OLIO 38X52X8 1AZ	1		
4			ED0017601310-S	BOLT	1		
5			ED0084001200-S	PARAL.PIN	1		
6			ED0097320640-S	SCREW	10		
7			ED0044312240-S	GASKET	1		

8025250020 - ENGINE MOUNTS



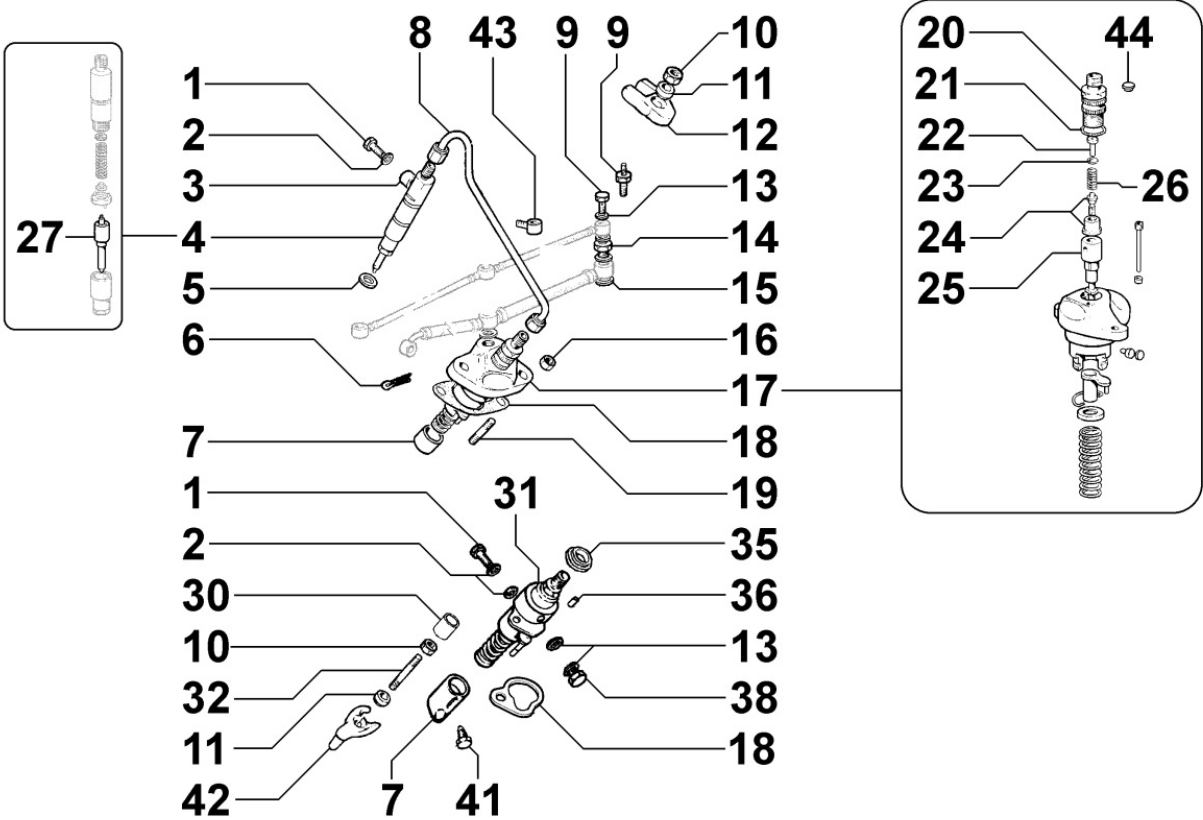
Pos	Kit	Included In	Code	Description	Qty	Old Code	Tech. Info
1			ED0017700040-S	BOLT	12		
2			ED00626R0030-S	FOOT	2		

8026250020 - CRANKSHAFT CENTRAL SUPPORT



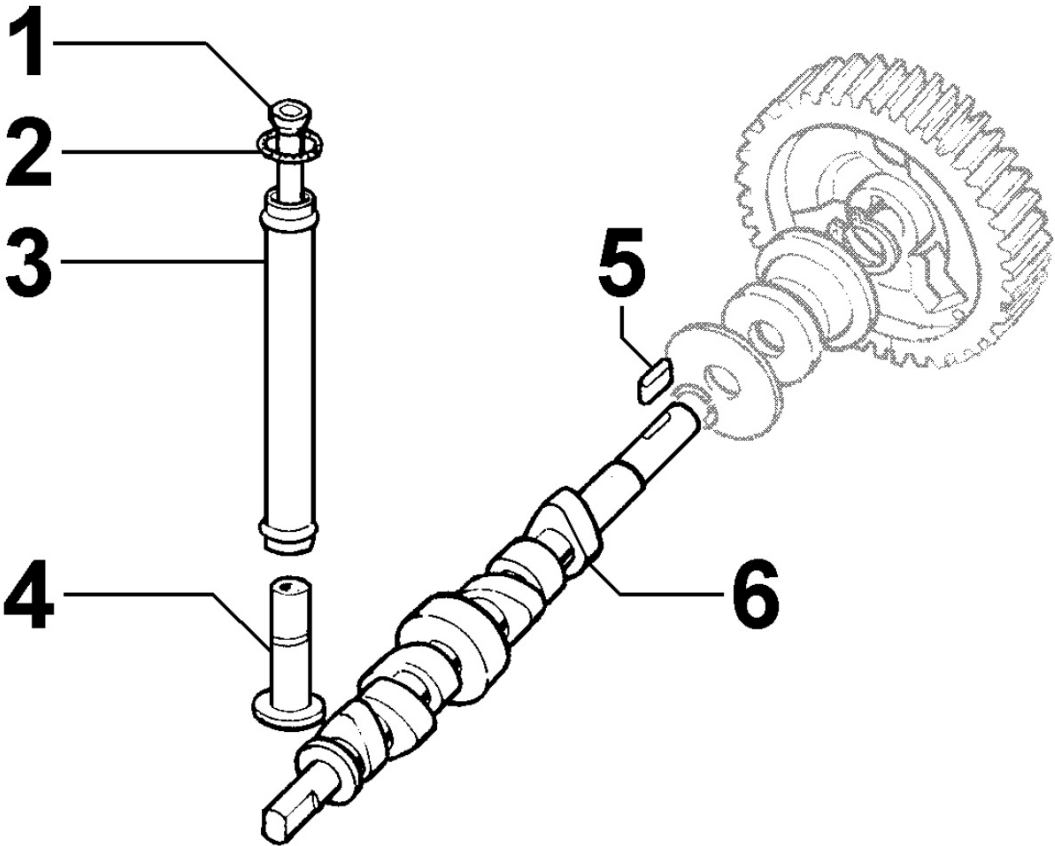
Pos	Kit	Included In	Code	Description	Qty	Old Code	Tech. Info
1			ED00956R0420-S	VALVE	2		
2			ED0097300310-S	ALLEN SCREW	2		
3			ED00880R0630-S	SUPPORT	1		
4			ED0084000200-S	PARAL.PIN	2		
5			ED00A26R0500-S	SLIDING BEARING	1	ED00310R0430-S	
5			ED00A26R0510-S	SLIDING BEARING	1	ED00310R0440-S	
5			ED00A26R0490-S	SLIDING BEARING	2	ED00310R0310-S	
6			ED0076250100-S	WASHER	2		
7			ED0097300320-S	SCREW	2		

8030250030 - INJECTION SYSTEM



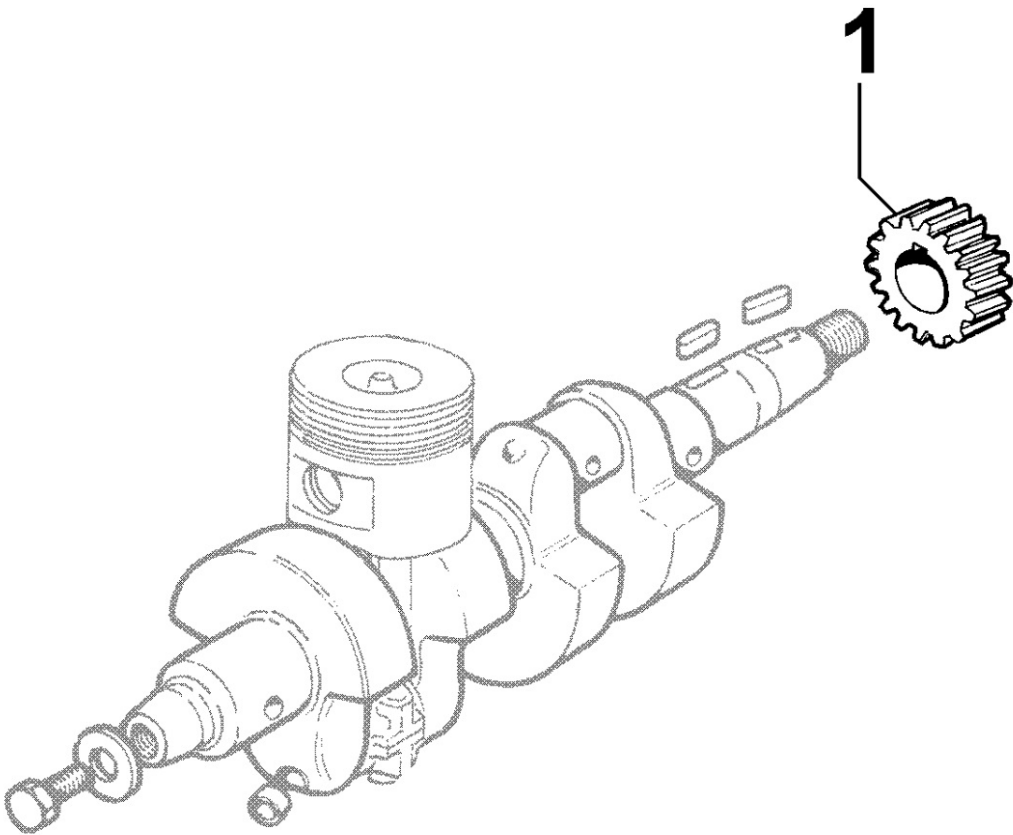
Pos	Kit	Included In	Code	Description	Qty	Old Code	Tech. Info
1			ED0072600530-S	UNION	2		
2			ED0046700620-S	GASKET	2		
3			ED00754R0500-S	WASHER	2		
4	(A)		ED00644R0470-S	SPRAYER COMPLETE NEW-DIESEL	2		
5			ED00754R0350-S	WASHER	2		
5			ED00754R0510-S	WASHER	4		
6			ED00555R0370-S	SPRING	3		
7			ED0072150350-S	TAPPET	2		
8			ED00944R0680-S	PIPE	2		
9			ED00716R0170-S	UNION	2		
10			ED0032400160-S	HEX.NUT	2		
11			ED00771R0970-S	WASHER	2		
12			ED00858R0940-S	BRACKET	2		
13			ED0046700580-S	COPPER GASKET	6		
14			ED0019010120-S	BOLT	2	ED0019010130-S	
14			ED0019010120-S	BOLT	2	ED0082550110-S	
15			ED0046700600-S	C.GASKET	4		
16			ED0032030990-S	NUT	4		
17	(B)		ED00656R0600-S	INJE.PUMP	2		
18			ED0045800570-S	GASKET 0.05	2		
18			ED0045800230-S	GASKET 0.30	2		
18			ED0045800290-S	GASKET 0.10	6		
19			ED0067800680-S	STUD	4		
25		(B)	ED00660R0240-S	POMPANTE/PUMPING ELEMENT	2		
27		(A)	ED00644R0680-S	NOZZLE	1	ED00644R0530-S	

8035250030 - CAMSHAFT



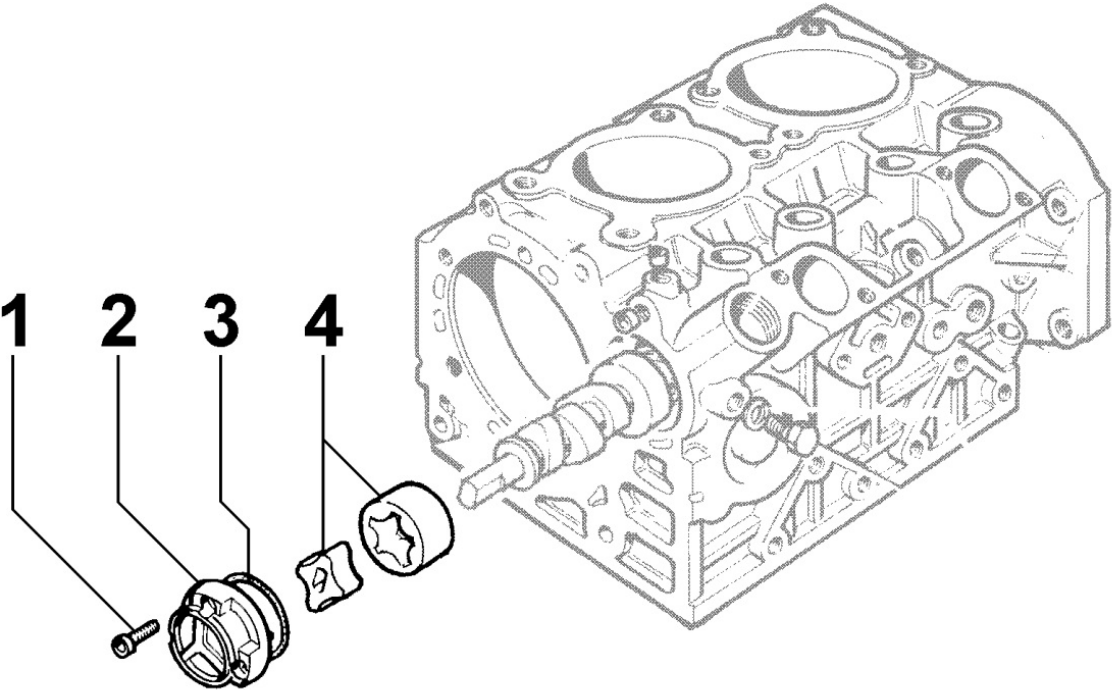
Pos	Kit	Included In	Code	Description	Qty	Old Code	Tech. Info
1			ED00072R0100-S	PUSH ROD	4		
2			ED0012000060-S	O RING	8		
3			ED00940R0380-S	PIPE	4		
4			ED00708R0190-S	TAPPET	4		
5			ED00498R0360-S	KEY	1		
6			ED00A23R0020-S	CAMSHAFT	1		

8038250010 - TIMING GEAR



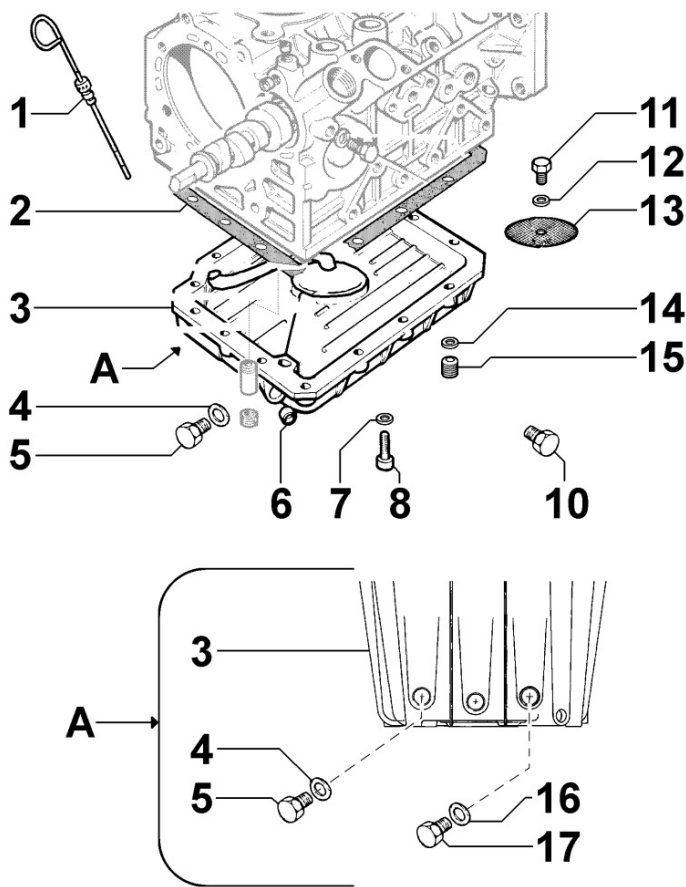
Pos	Kit	Included In	Code	Description	Qty	Old Code	Tech. Info
1			ED00469R0640-S	GEAR	1		

8040250010 - OIL PUMP



Pos	Kit	Included In	Code	Description	Qty	Old Code	Tech. Info
1			ED0097304380-S	SCREW TCEI M5x28 UNI5931-8G	3		
2			ED00233R0860-S	COVER	1		
3			ED00579R0490-S	RING	1		
4			ED00A21R0430-S	OIL PUMP	1		

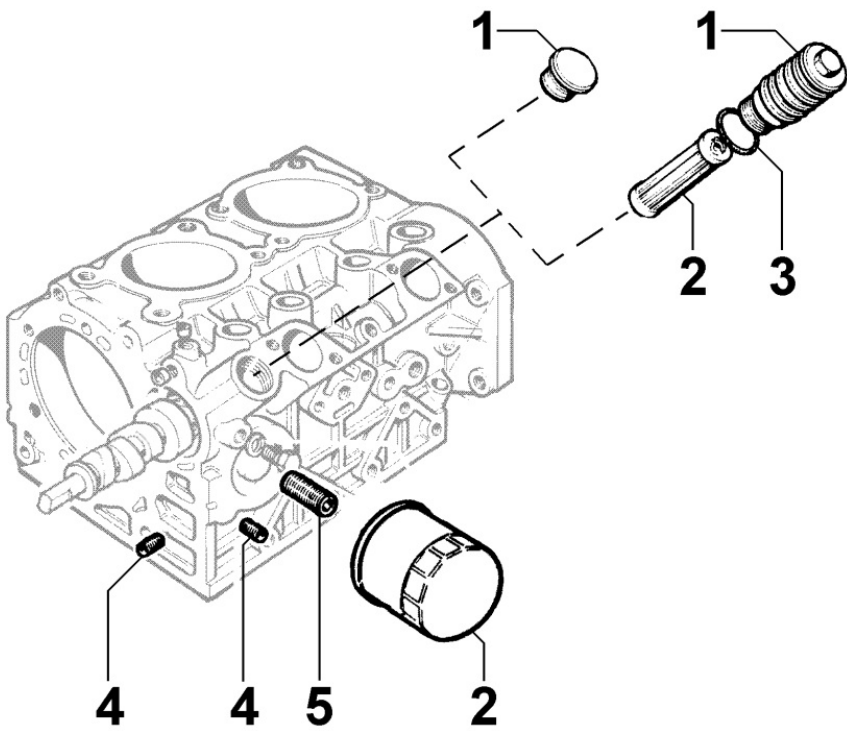
8041250040 - OIL PAN



Pos	Kit	Included In	Code	Description	Qty	Old Code	Tech. Info
2			ED0046012210-S	GASKET	1		
3	(A)		ED0066456960-S	OIL SUMP	1	ED00248R0760-S	
4		(A)	ED0046700610-S	C.GASKET	2		
5		(A)	ED0089650050-S	CAP	1		
6		(A)	ED00886R0570-S	PLUG	1		
8			ED0017601380-S	BOLT	15		
10		(A)	ED0090400120-S	PLUG	1		
11		(A)	ED0017600010-S	BOLT	1		
12		(A)	ED0076250080-S	WASHER	1		
13		(A)	ED00734R0720-S	NET	1		

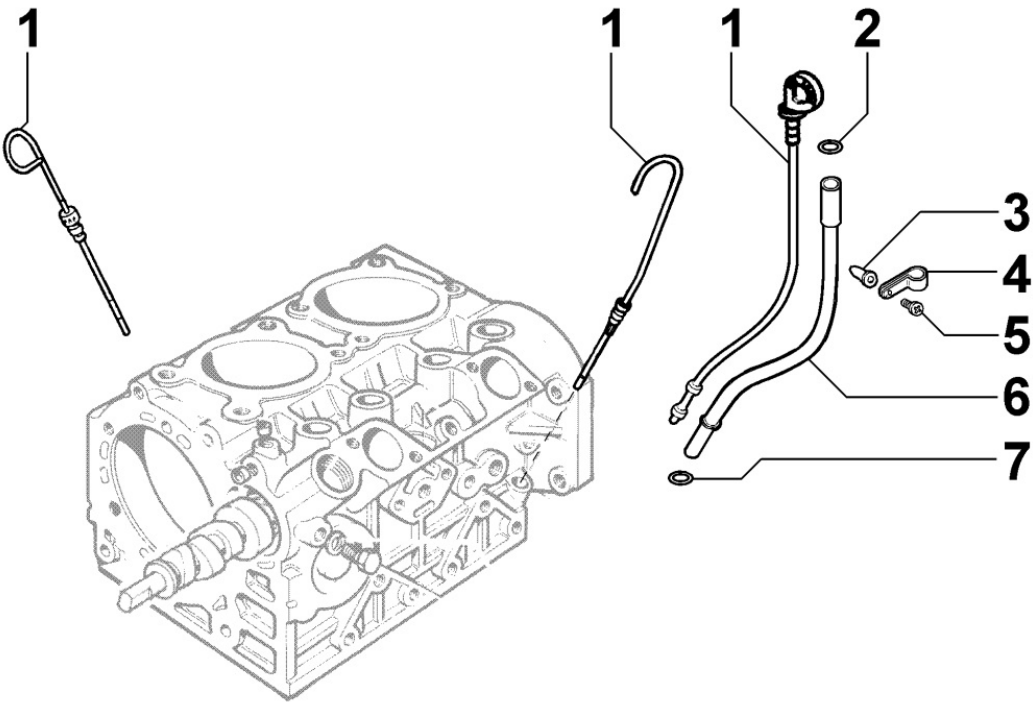


8042250100 - OIL FILTER



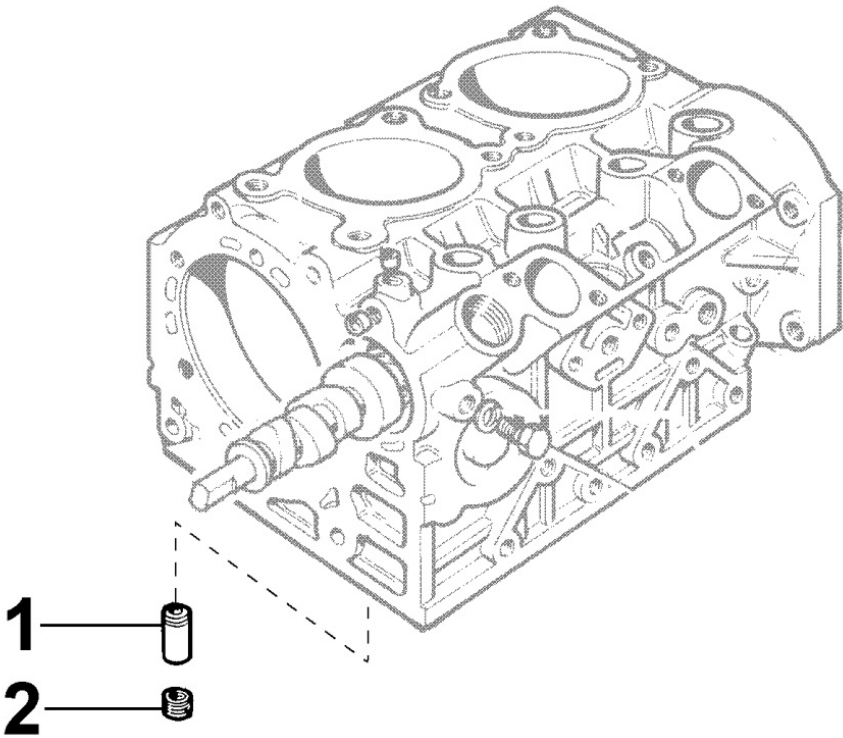
Pos	Kit	Included In	Code	Description	Qty	Old Code	Tech. Info
1			ED00886R0740-S	PLUG	1		
2			ED0021750400-S	OIL FILTER CARTRIDGE	1		
4			ED0097651110-S	A.GRUBSCREW	2		
5			ED00717R0370-S	UNION	1		

8043250010 - OIL DIPSTICK



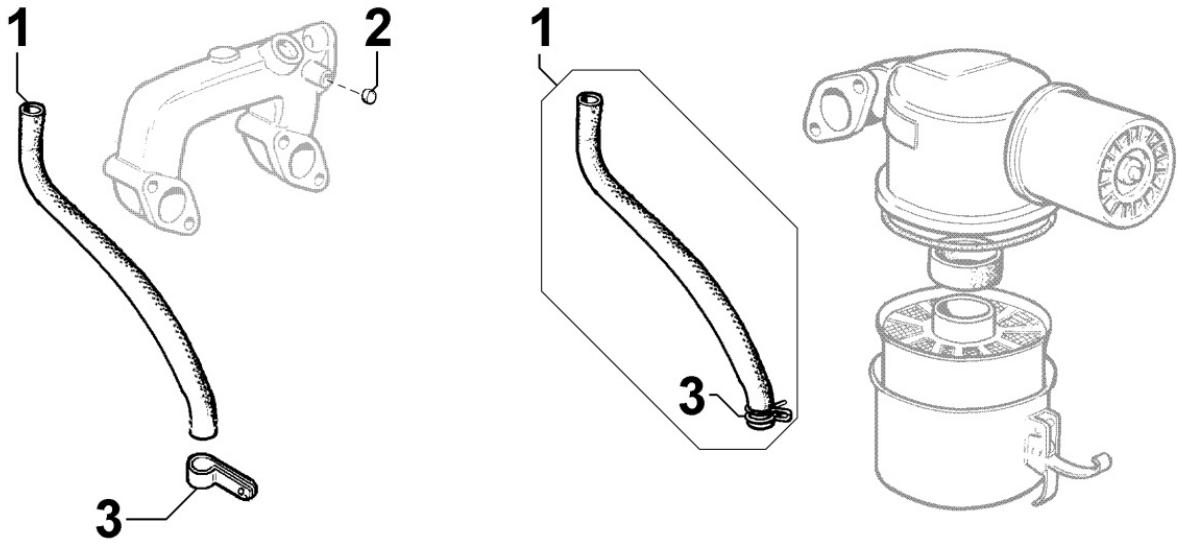
Pos	Kit	Included In	Code	Description	Qty	Old Code	Tech. Info
1			ED00076R0480-S	OIL DIPSTICK	1		

8044250010 - OIL PRESSURE VALVE



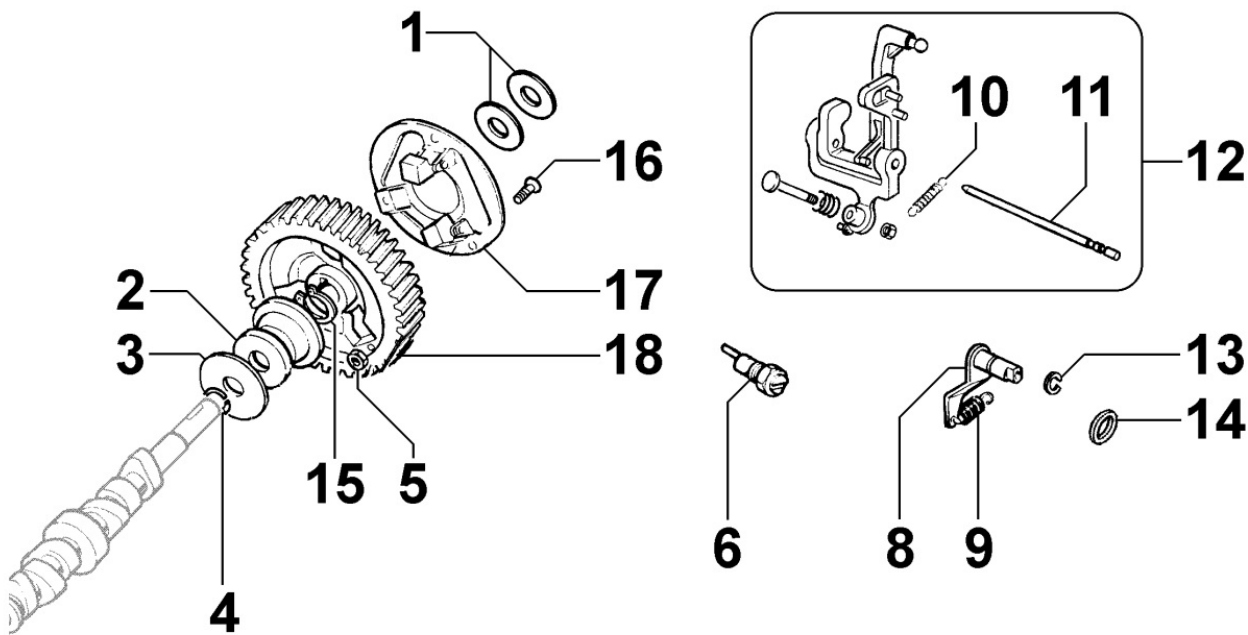
Pos	Kit	Included In	Code	Description	Qty	Old Code	Tech. Info
1			ED00956R0450-S	VALVE	1		
2			ED00999R0200-S	SCREW	1		

8045250020 - BREATHER SYSTEM



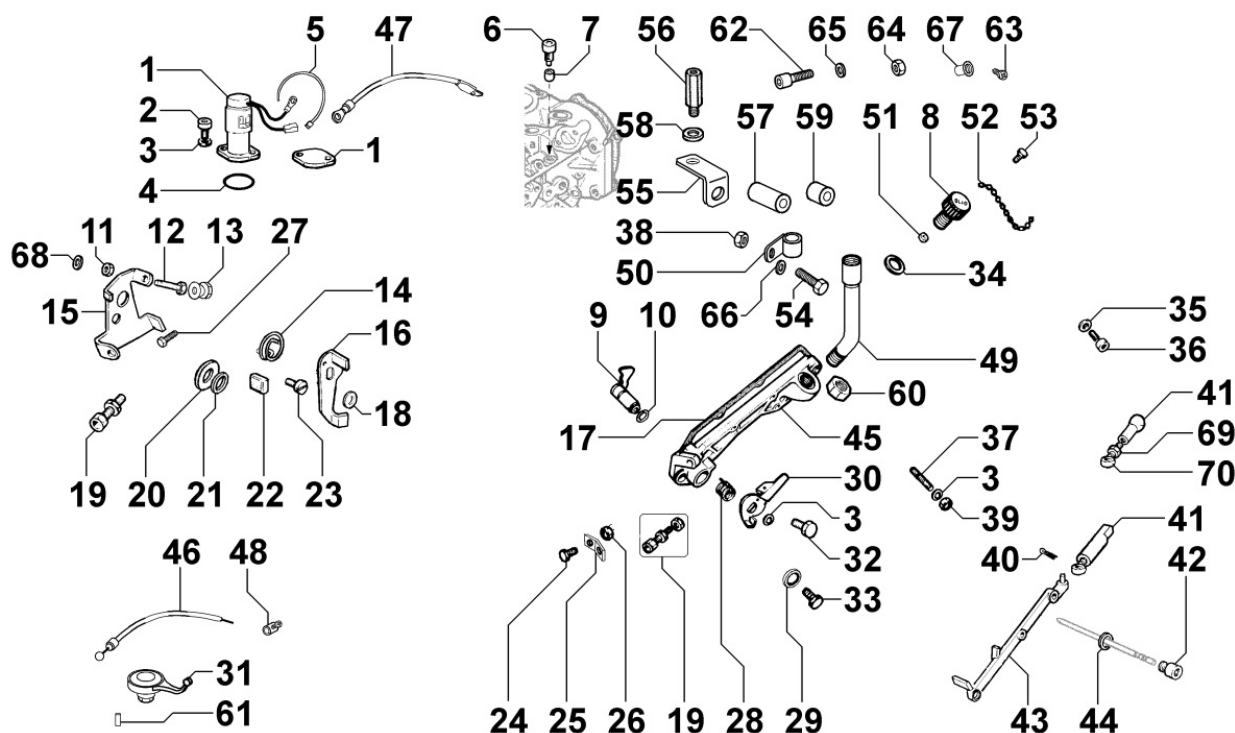
Pos	Kit	Included In	Code	Description	Qty	Old Code	Tech. Info
1	(A)		ED00949R0510-S	PIPE	1		
3		(A)	ED0036301780-S	CLAMP	1		

8050250180 - SPEED GOVERNOR



Pos	Kit	Included In	Code	Description	Qty	Old Code	Tech. Info
1			ED00777R0330-S	WASHER	1		
1			ED00777R0340-S	WASHER	1		
2			ED00621R0220-S	CAP	1		
3			ED00777R0780-S	WASHER	1		
4			ED00059R0850-S	RING	1		
5			ED0032030380-S	HEX.NUT	3		
6			ED00722R0410-S	REGISTRO/ADJUSTING SCREW	1		
8			ED00491R0660-S	LEVER EPA	1		
9			ED00551R0470-S	MOLLA/SPRING	1		
10		(A)	ED00551R0140-S	SPRING	1		
11		(A)	ED00601R0770-S	PIN	1		
12	(A)		ED00495R0150-S	LEVER	1		
13			ED0011650360-S	RING	1		
15			ED0012400130-S	SNAP RING	1		
16			ED00997R0880-S	SCREW SPEI M5x16 UNI5933 10.9	3		
17			ED0048966740-S	REGULATOR GROUP RUGGERINI	1		

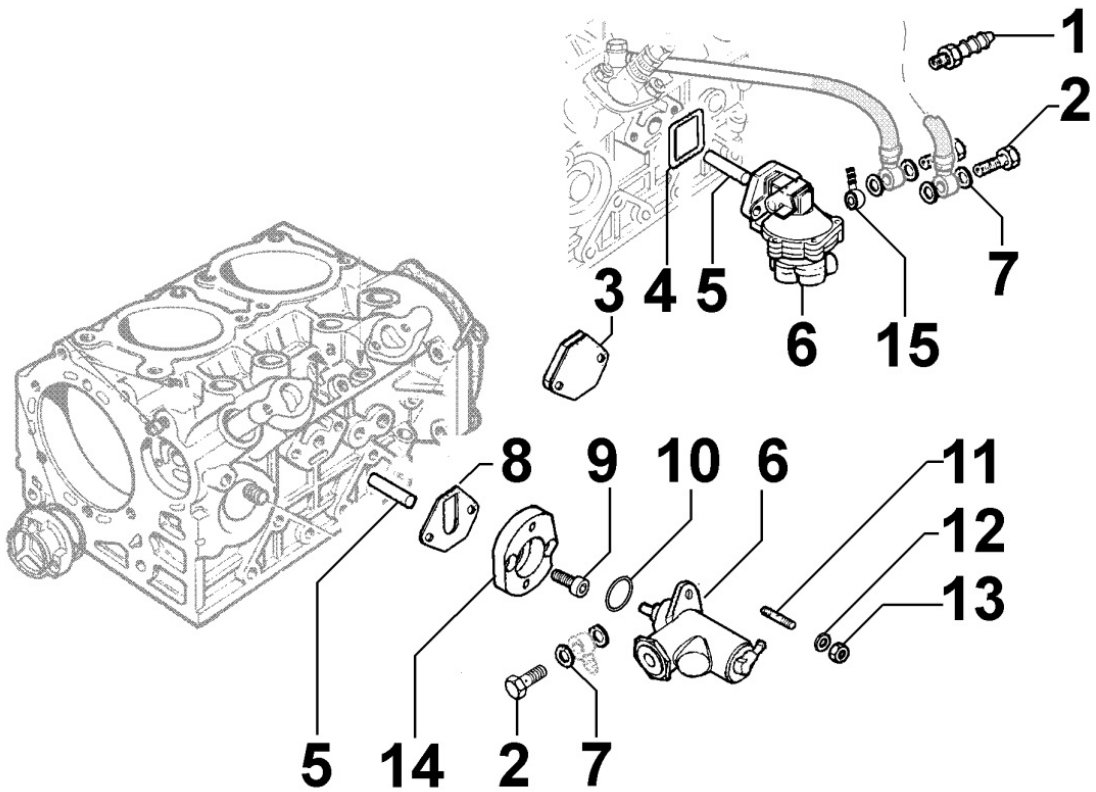
## 8051250110 - CONTROLS



Pos	Kit	Included In	Code	Description	Qty	Old Code	Tech. Info
1			ED00674R0470-S	ELECTROMAGNET	1		
2			ED0097320840-S	SCREW	2		
3		(C)	ED0076250080-S	WASHER	4		
4			ED00579R0790-S	RING	1		
5			ED0024710190-S	COLLAR	2		
8			ED0090320950-S	FILLERPL.	1		
9	(B)	(C)	ED00494R0880-S	LEVER	1		
10		(B) (C)	ED0012000010-S	O RING	1	ED00579R0010-S	
11		(A)	ED0032400040-S	HEX.NUT	2		
12		(A)	KDISC.		1	ED0017550190-S	
15	(A)		ED00613R0910-S	PIASTRINA/PLATE	1		
16			ED0052012700-S	LEVER	1		
17			ED0044312250-S	GASKET	1		
20			ED0057150250-S	SPRING	2		
21			ED00777R0040-S	WASHER	7		
22			ED0065500100-S	KNOB	2		
23			ED0017700010-S	BOLT	1		
27		(A)	ED0017550030-S	BOLT	1		
28		(C)	ED00547R0280-S	SPRING	1		
29			ED0076252740-S	WASHER	2		
30		(C)	ED00491R0670-S	LEVER	1		
32		(C)	ED0017600010-S	BOLT	1		
33			ED0017600030-S	BOLT	1		
34		(C)	ED00758R0390-S	WASHER	1		
35			ED0046700580-S	COPPER GASKET	2		
36			ED0097320780-S	SCREW	5		
37			ED0067600340-S	STUD	1		
39			ED00323R0070-S	NUT	1		
40			ED00555R0370-S	SPRING	1		
41			ED00833R0100-S	TIE ROD	1		
42			ED00989R0620-S	SCREW	1		
43			ED00927R0140-S	TIE ROD	1		



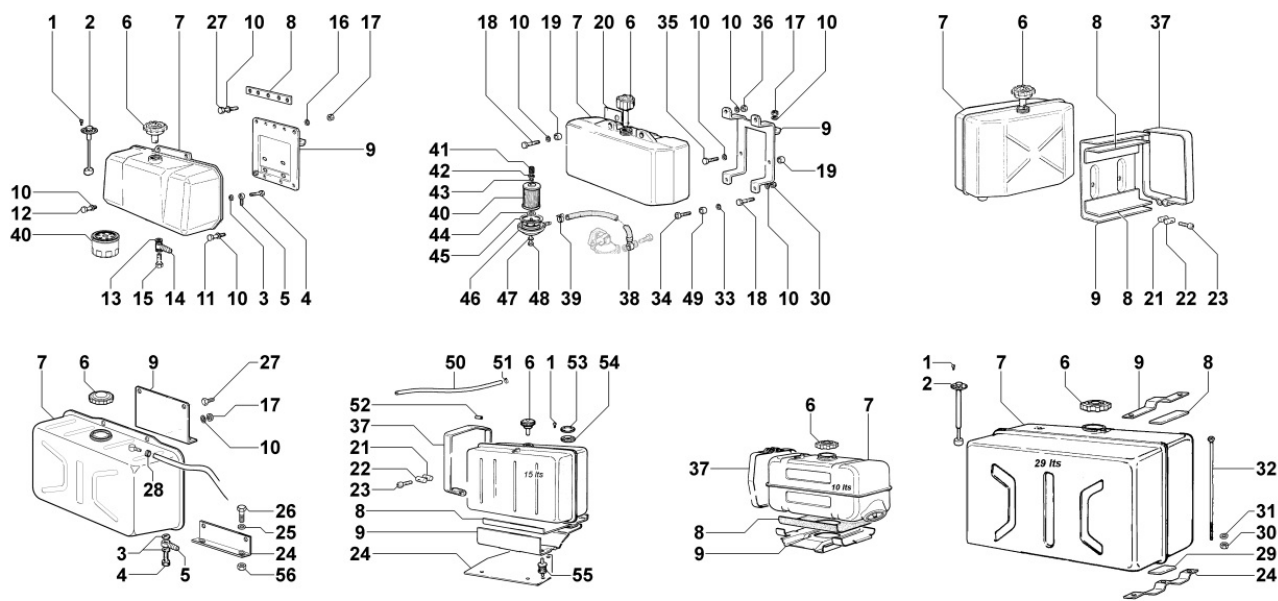
8062250180 - FUEL FEED PUMP



Pos	Kit	Included In	Code	Description	Qty	Old Code	Tech. Info
2			ED0019011930-S	BOLT	2		
4			ED0012000870-S	O RING	1		
5			ED00704R0130-S	DRIVE ROD	1		
6			ED0065851510-S	FUEL FEEDING PUMP	1		
7			ED0046700590-S	COPPER GASKET 10,2X14X1,5	4		
11			ED0067800490-S	STUD	2		
12			ED0075550290-S	WASHER	2		
13			ED0032401640-S	HEX.NUT	2		

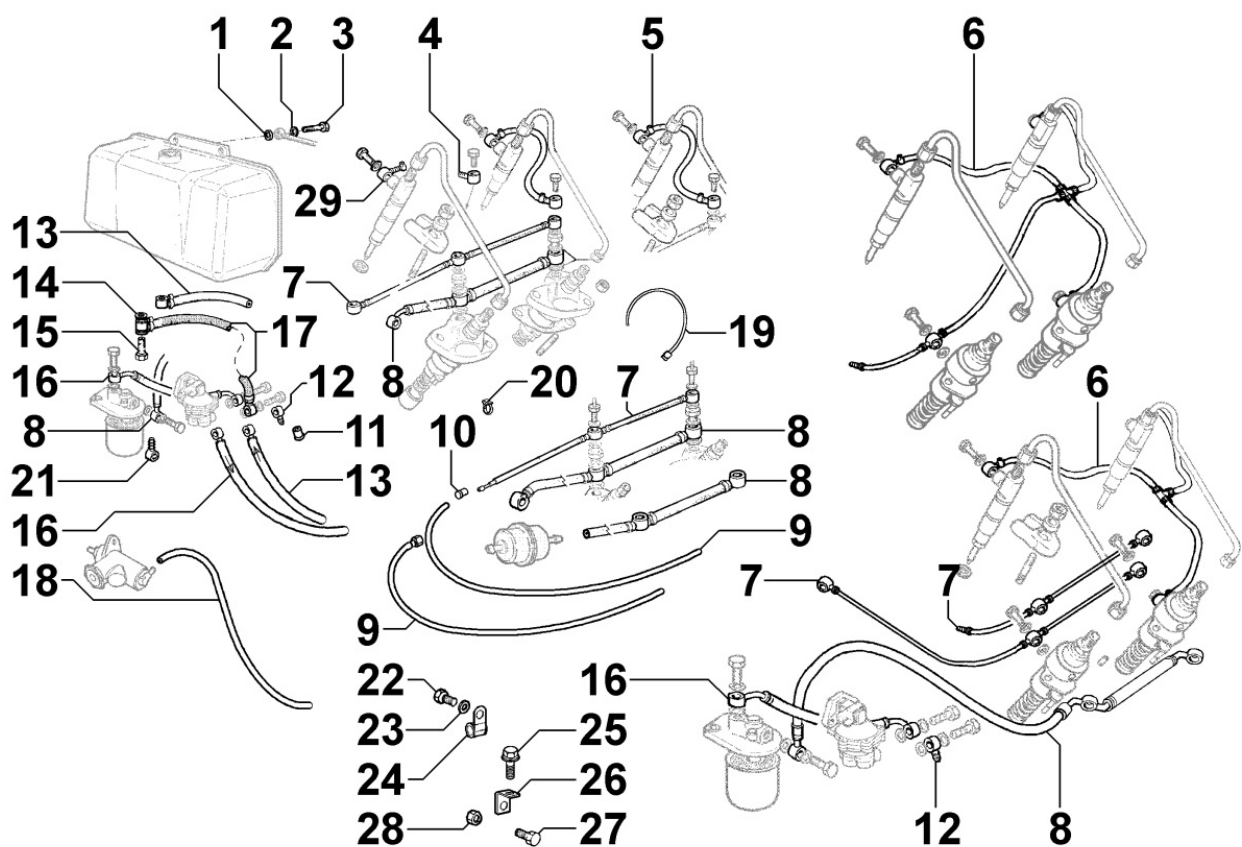


8063250370 - FUEL TANK



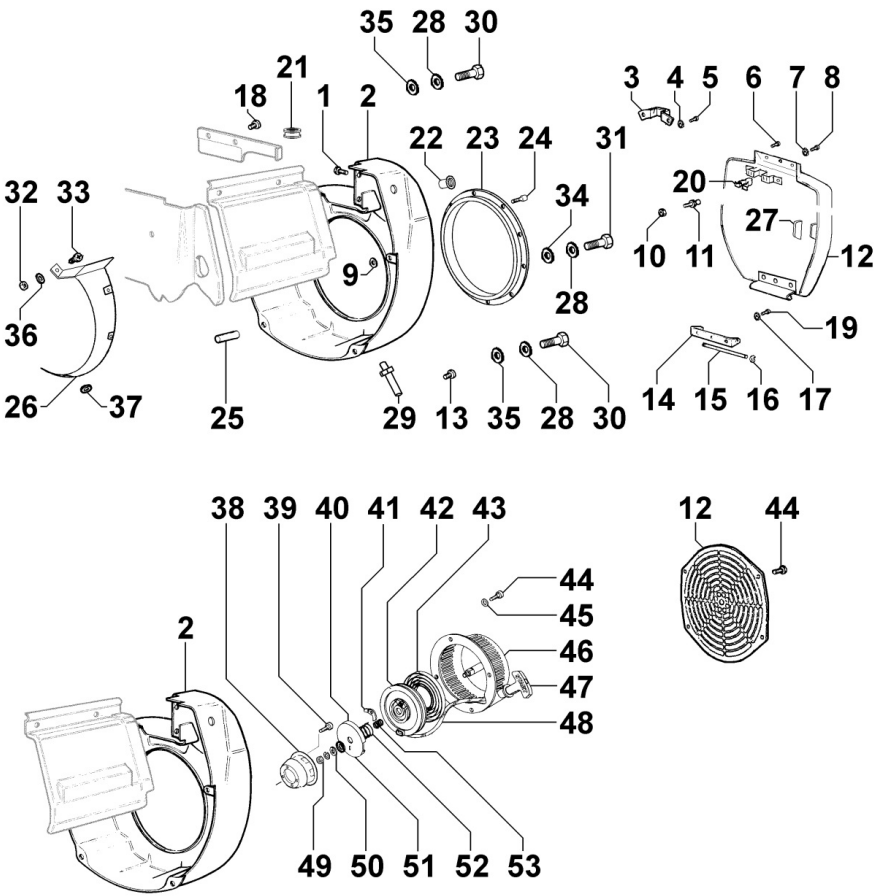
Pos	Kit	Included In	Code	Description	Qty	Old Code	Tech. Info
6			ED0090430980-S	TANK CAP	1		
7		(A)	ED0081011060-S	POLYETHYLENE TANK	1		
9			ED00880R0930-S	SUPPORTO/SUPPORT	1		
10			ED0076250120-S	WASHER	10		
16			ED0075650070-S	SP.WASHER	2		
17			ED0032400160-S	HEX.NUT	2		
18			ED0017700060-S	BOLT	4		
19			ED00354R0800-S	DISTANZIALE/SPACER 10	4		
20			ED00582R0960-S	TARGHETTA ADESIVA/ADHESIV #10	1		
30			ED0032030750-S	NUT	4		
33			ED00772R0300-S	RONDELLA/WASHER 10	2		
34			ED0097320640-S	SCREW	2		
38		(B) (C)	ED0093758570-S	FUEL TUBE	1		
39		(B) (C)	ED0036300080-S	CLAMP	1		
40			ED00391R0450-S	FUEL FILTER-INTAKE	1	ED00391R0220-S	
40			ED0021752050-S	FUEL FILTER CARTRIDGE	1	ED00450R0970-S	
40		(C)	ED0021752050-S	FUEL FILTER CARTRIDGE	1	ED00175R0320-S	
46	(C)		ED00391R0450-S	FUEL FILTER-INTAKE	1		
47			ED00754R0320-S	RONDELLA/WASHER 10	1		
48			KDISC.		1	ED0017600610-S	
49			ED0035260970-S	SPACER	2		

8064250030 - FUEL PIPING



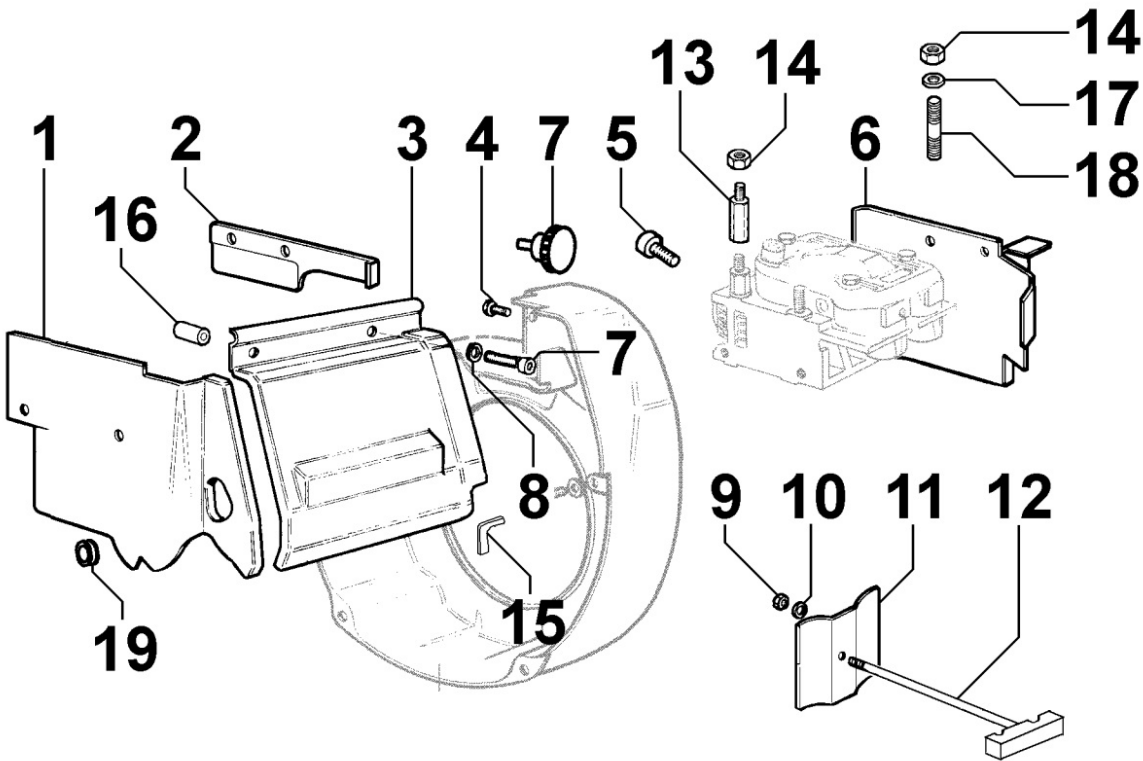
Pos	Kit	Included In	Code	Description	Qty	Old Code	Tech. Info
1			ED00754R0460-S	WASHER	3		
2			ED0046700580-S	COPPER GASKET	1		
3			ED0019011730-S	SCREW	1		
5			ED0095712520-S	FUEL TUBE	2		
7			ED00937R0370-S	PIPE	1		
8			ED00937R0460-S	PIPE	1		
19			ED0024710190-S	COLLAR	2		

8070250020 - AIR SHROUD



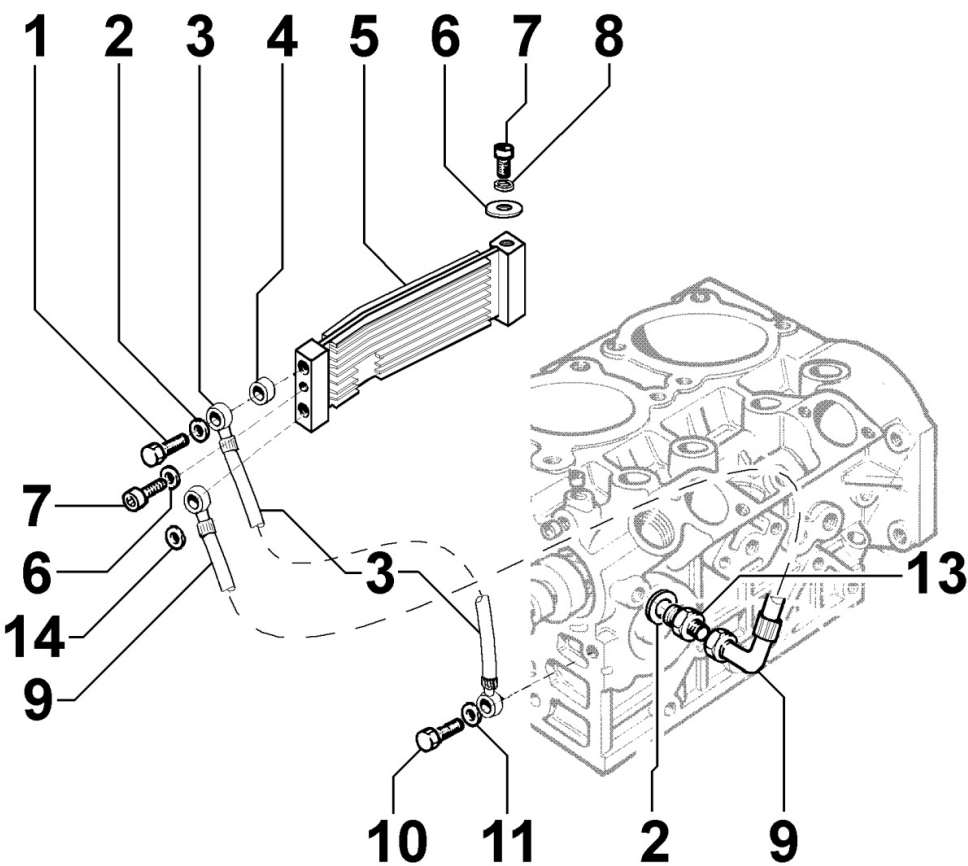
Pos	Kit	Included In	Code	Description	Qty	Old Code	Tech. Info
1			ED0097301070-S	SCREW	4		
2			ED0025696760-S	CONVEYOR	1		
2			ED0025696760-S	CONVEYOR	1	ED00228R0720-S	
9			ED0076250080-S	WASHER	2		
18			ED0097901380-S	CH-H.SCREW	2		

8072250030 - COOLING PLATES



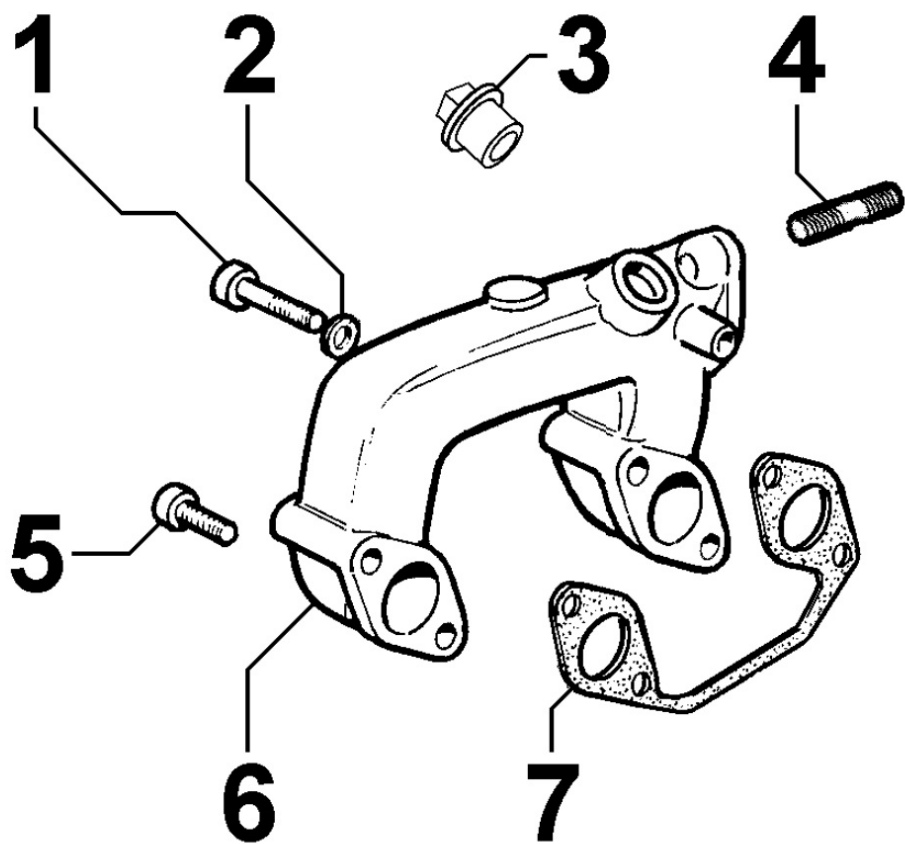
Pos	Kit	Included In	Code	Description	Qty	Old Code	Tech. Info
1			ED00589R0190-S	PARATIA/BULKHEAD	1		
2			ED00589R0070-S	CONVEYOR	1		
3			ED0029201870-S	AIR B. HOOD	1		
4			ED0097301070-S	SCREW	2		
6			ED00588R0850-S	SHROUD	1		
7			ED0097310920-S	ALLEN SCREW	2		
8			ED0076250120-S	WASHER	2		
9			ED0032030770-S	NUT	1		
10			ED0076250520-S	WASHER	1		
11			ED00589R0200-S	BULKHEAD	1		
12			ED00926R0780-S	TIE ROD	1		

8078250080 - OIL RADIATOR / OIL COOLER



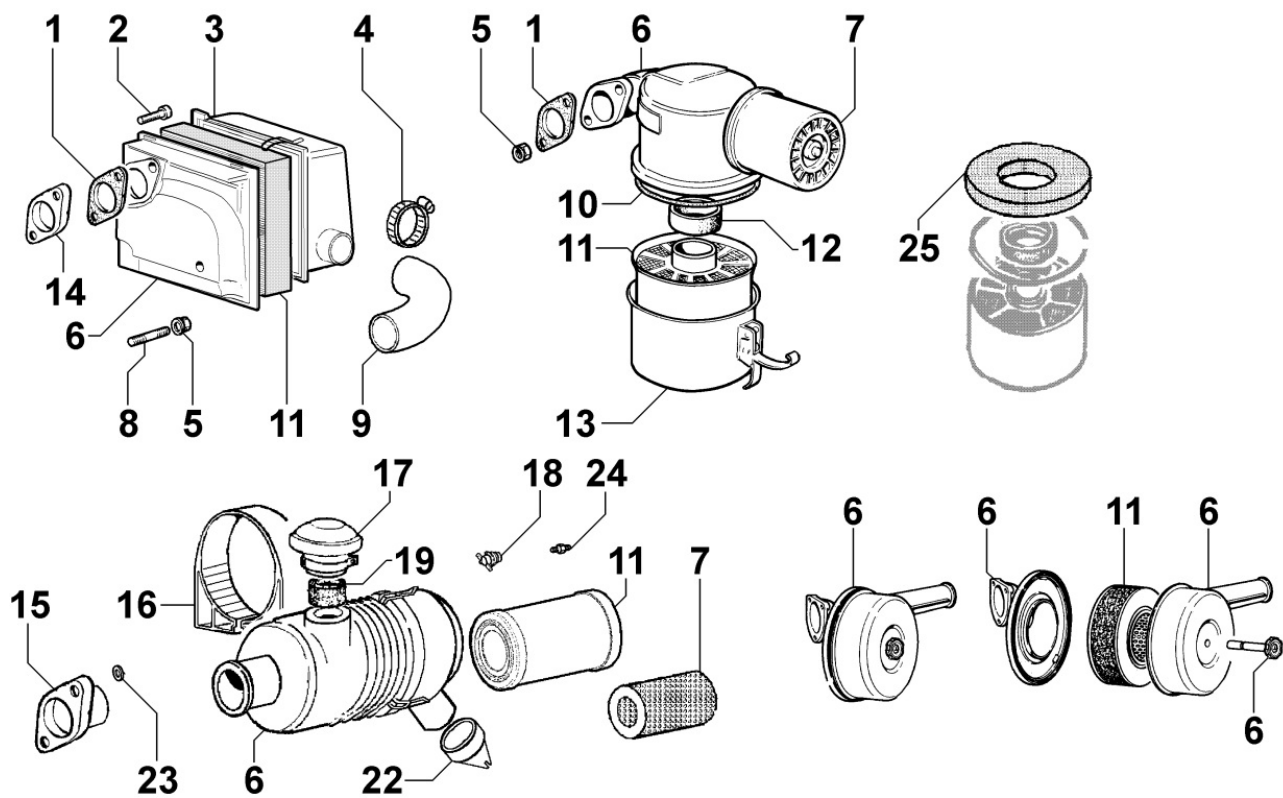
Pos	Kit	Included In	Code	Description	Qty	Old Code	Tech. Info
1			ED00717R0900-S	UNION	2		
2			ED0046700600-S	C.GASKET	5		
3			ED0094853780-S	PIPE FOR OIL RADIATOR	1		
4			ED00355R0500-S	SPACER	2		
5			ED0073504470-S	OIL RADIATOR	1		
6			ED0076260510-S	WASHER	1		
7			ED0097301070-S	SCREW	2		
8			ED0076250080-S	WASHER	2		
9			ED0094853790-S	PIPE FOR RETURN OF OIL RADIATOR	1		
10			ED0019011930-S	BOLT	1		
11			ED0046700360-S	GASKET	2		
13			ED00717R0910-S	UNION	1		
14			ED00754R0380-S	WASHER	2		

8080250110 - AIR INLET MANIFOLD / AIR FILTER



Pos	Kit	Included In	Code	Description	Qty	Old Code	Tech. Info
1			ED0097300340-S	CAPSCREW	2		
2			ED00771R0110-S	WASHER	4		
5			ED0097320630-S	CAPSCREW	2		
6			ED00211R0590-S	MANIFOLD	1		
7			ED0044200970-S	GASKET	1		

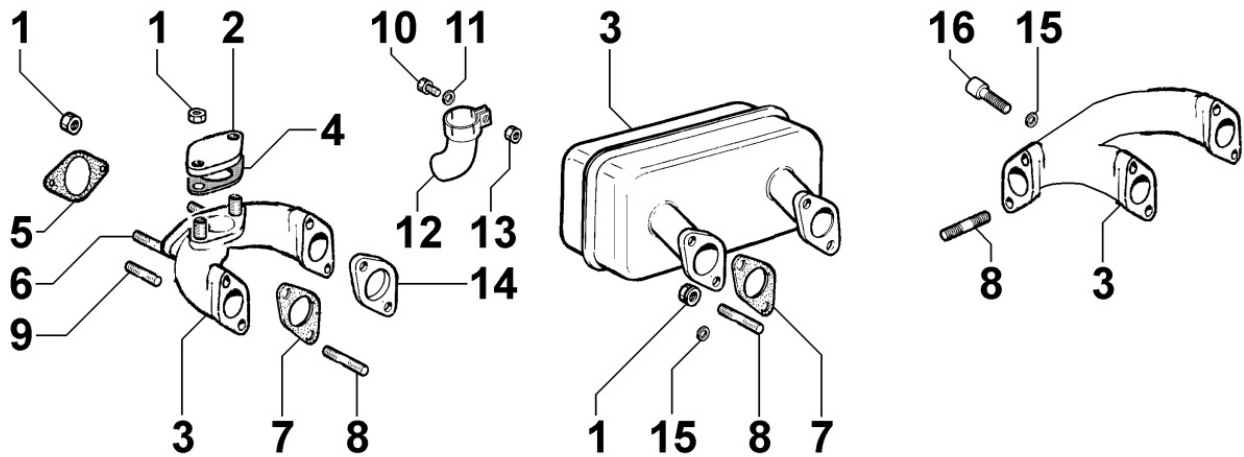
8081250390 - AIR CLEANER



Pos	Kit	Included In	Code	Description	Qty	Old Code	Tech. Info
1			ED00450R0350-S	GASKET	1		
2			ED0097320640-S	SCREW	2		
3			ED0026051100-S	FIL.COVER	1		
5			ED0032401650-S	HEX.NUT	1		
6			ED00268R0290-S	AIR FILTER	1		
8			ED0067800190-S	STUD	1		
11			ED0021752730-S	AIR FILTER CARTRIDGE	1		



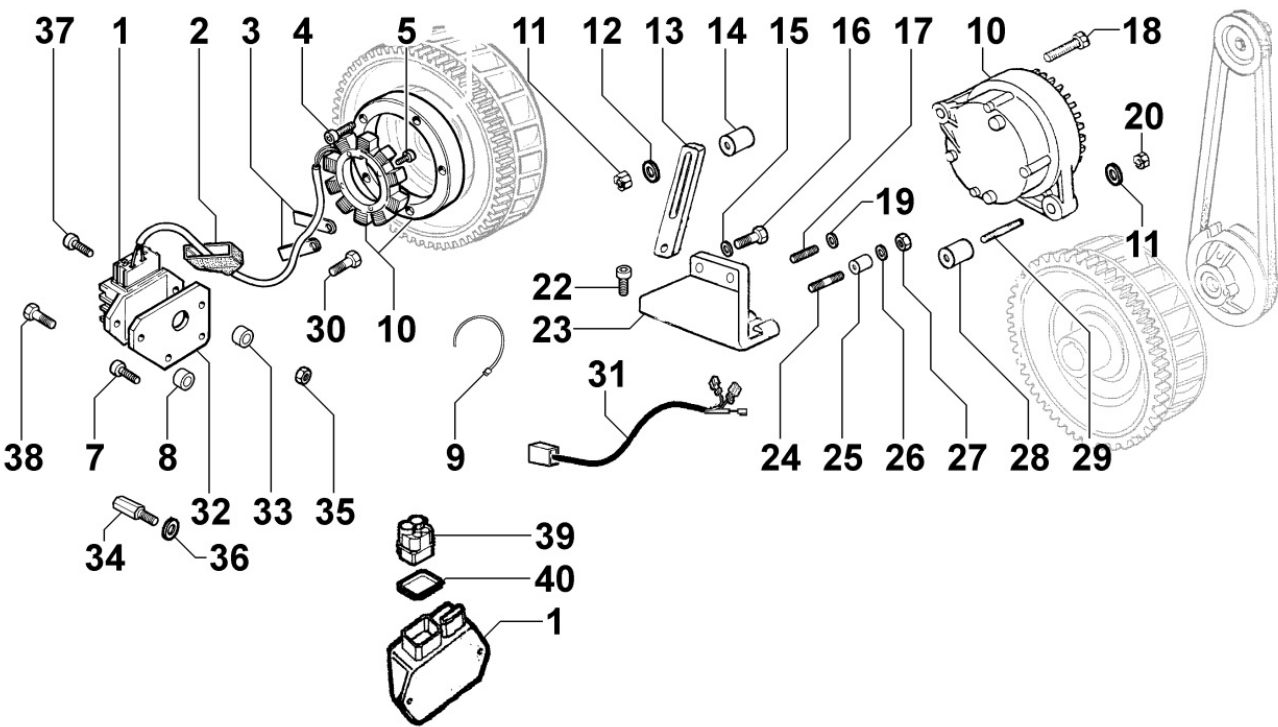
8085250170 - EXHAUST GAS MANIFOLD





Pos	Kit	Included In	Code	Description	Qty	Old Code	Tech. Info
1			ED0032401630-S	HEX.NUT M8	4		
3			ED0054620990-S	MUFFLER	1		
7			ED00450R0960-S	GASKET	2		
8			ED0067800680-S	STUD	4		
14			ED00399R0800-S	FLANGIA/FLANGE	2		

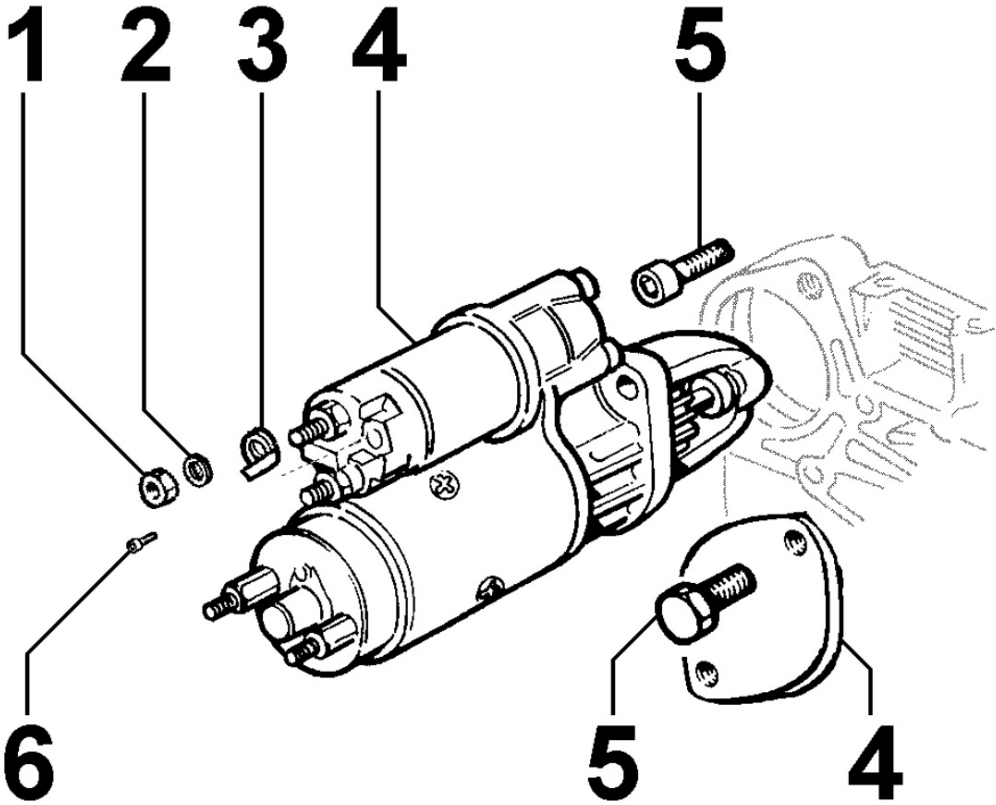


8100250420 - VOLTAGE ALTERNATOR



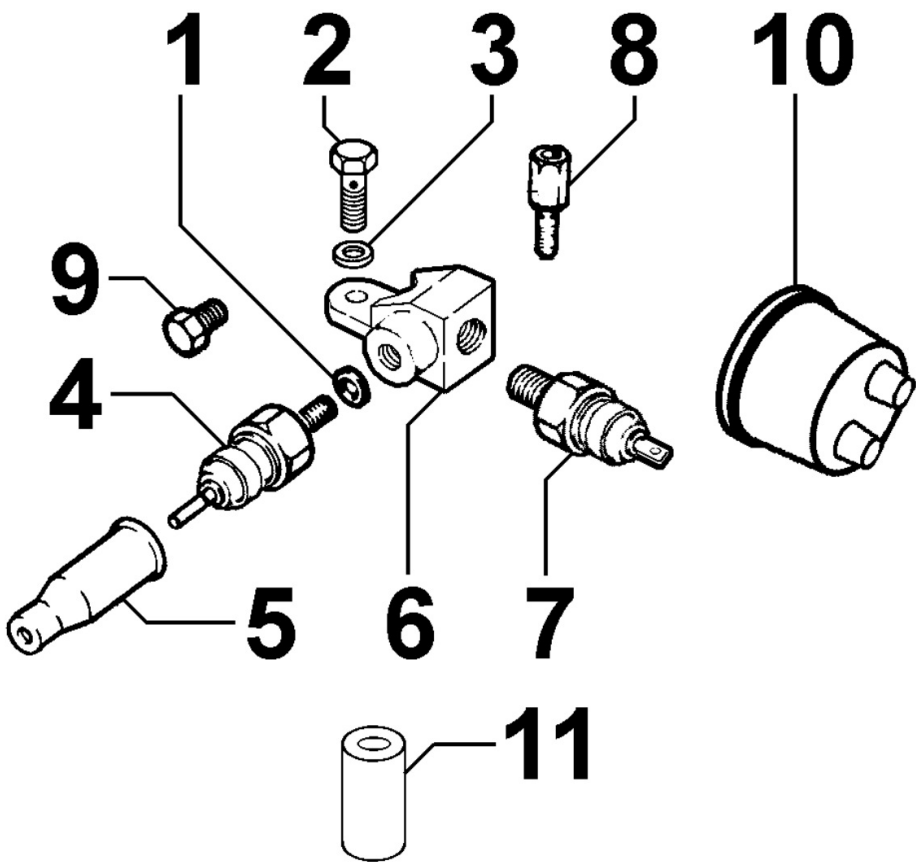
Pos	Kit	Included In	Code	Description	Qty	Old Code	Tech. Info
1			ED0073623830-S	VOLT.REGUL.FVIC	1		
2			ED0021450140-S	CAP	1		
3			ED00613R0760-S	PLATE	2		
4			ED0097303190-S	SCREW	5		
5			ED0017550240-S	BOLT	4		
7			ED0097320630-S	CAPSCREW	2		
8			ED0035210430-S	SPACER	2		
9			ED0024710190-S	COLLAR	1		
10			ED0011573410-S	ALTERNATOR	1		

8101250030 - STARTING MOTOR



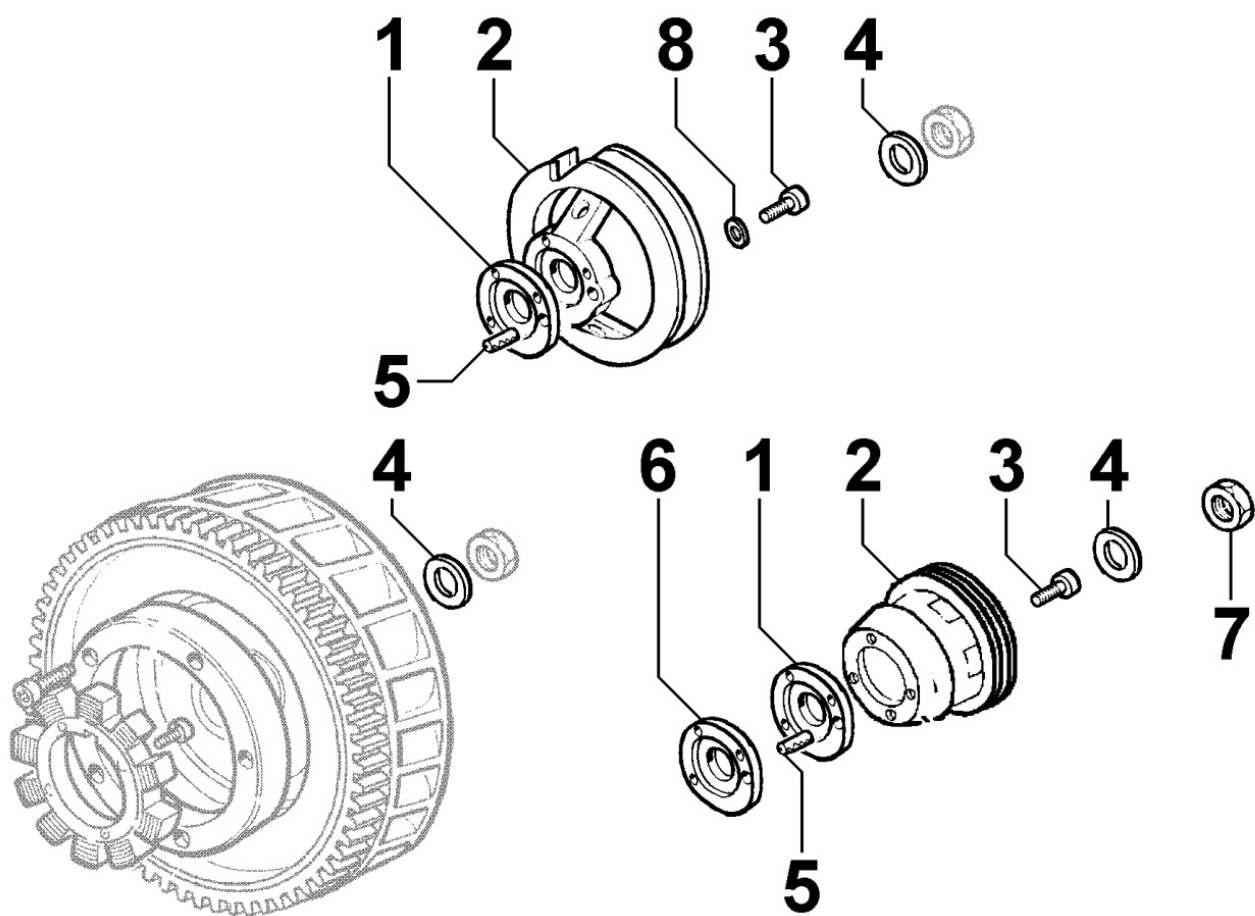
Pos	Kit	Included In	Code	Description	Qty	Old Code	Tech. Info
1			ED0032400160-S	HEX.NUT	1		
2			ED00763R0020-S	WASHER	1		
4			ED00563R0540-S	STARTING MOTOR	1		
5			ED0097300450-S	ALLEN SCREW	2		

8102250070 - OIL PRESSURE SWITCH



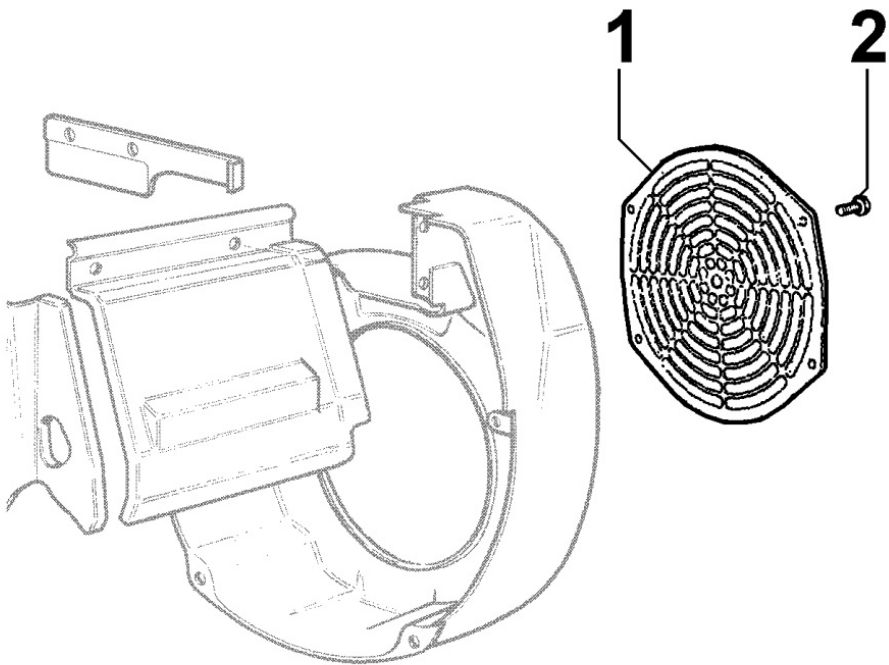
Pos	Kit	Included In	Code	Description	Qty	Old Code	Tech. Info
1			ED0046700580-S	COPPER GASKET	1		
4			ED00674R0780-S	OIL PRES.SWITCH 1-1,2atm	1		
5			ED0064910130-S	PIPE ELBOW	1		

8110250040 - STARTING



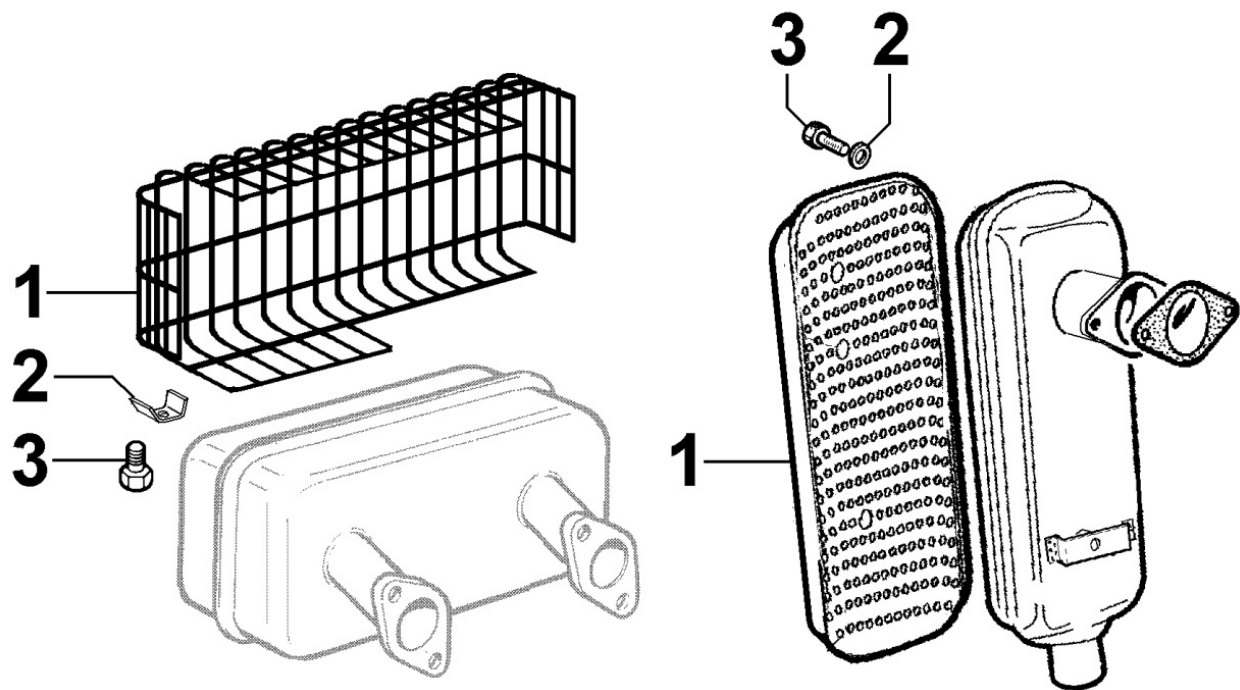
Pos	Kit	Included In	Code	Description	Qty	Old Code	Tech. Info
4			ED0076252980-S	RONDELLA/WASHER	1		

8170250100 - FLYWHEEL PROTECTION

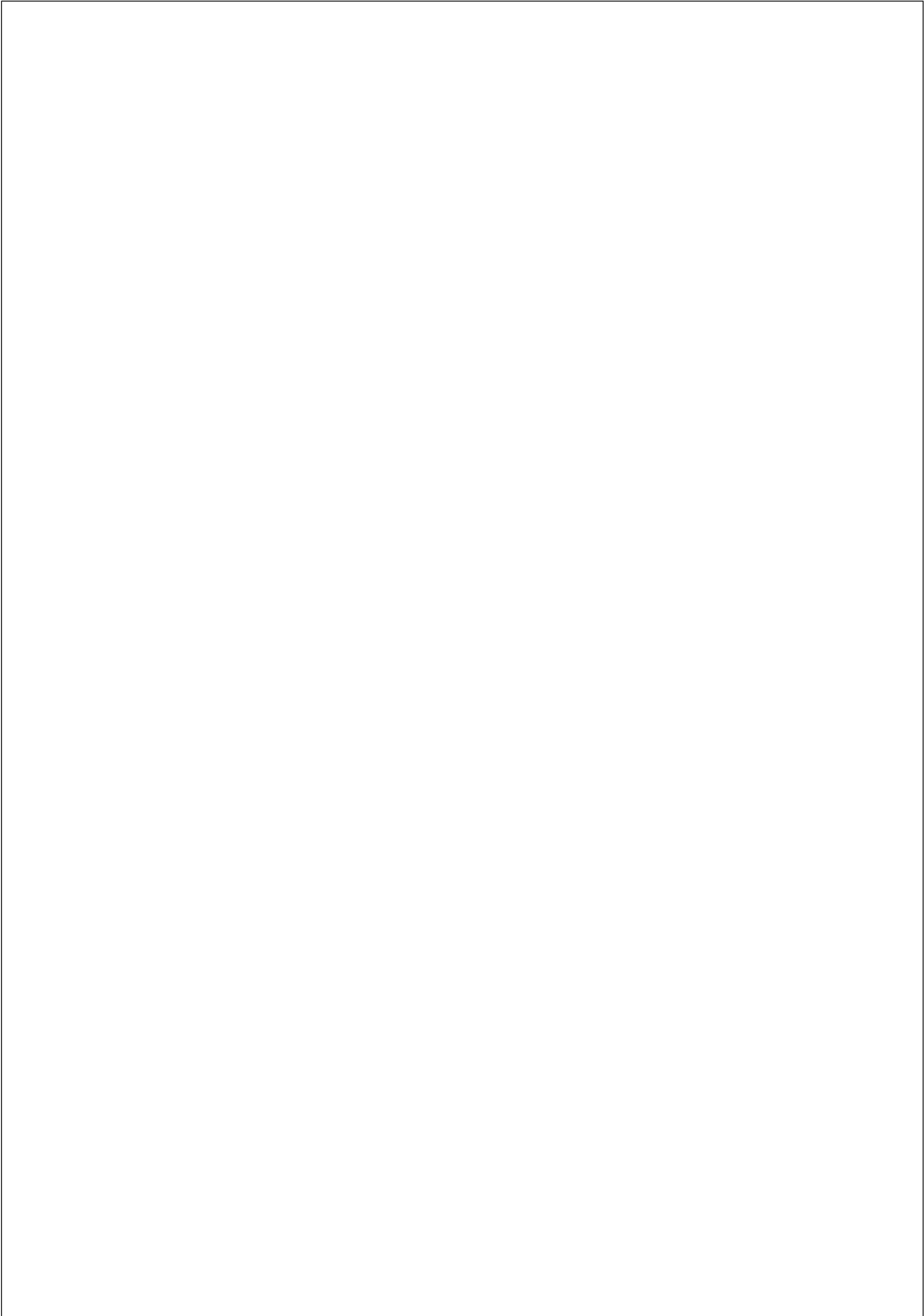


Pos	Kit	Included In	Code	Description	Qty	Old Code	Tech. Info
1			ED0069250090-S	GUARD	1		
2			ED00998R0130-S	SCREW	4		

8176250020 - MUFFLER GUARD



Pos	Kit	Included In	Code	Description	Qty	Old Code	Tech. Info
1			ED00688R1000-S	PROTECTION	1		
2			ED0051111130-S	PLATE	3		
3			ED0017600320-S	BOLT	3		



KOHLER®  
ENGINES