

# PD "S" series

# PD 50S

max. power 3,4 kW

Standard  
version



OPTIONAL  
Version with  
Site tow



PD 50 S			
a.c. output	230 V	max.kW	3,4
	50 Hz 1~	cont.kW	3,3
power factor		cos $\phi$	1
fuel starting		Diesel electric	
alternator		synchronous	
engine		Yanmar L70 AE	
cooling system		air	
displacement	c.c.	296	
n° cylinders		1	
prime power	HP	6,1	
R.P.M.		3000	
fuel tank capacity	lt.	10,5	
¾ load operating hours	h	10,5	
sound power level	L <sub>WA</sub>	96	
acoustic pressure at 7 mt.	dB(A)	71	

Standard  
version

DIMENSIONS	L	815	mm
	W	560	mm
	H	730	mm
WEIGHT		125	kg

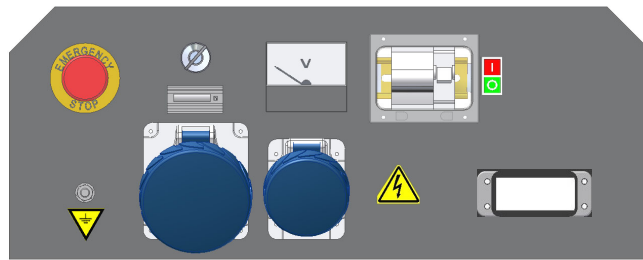
Version with  
Site tow

DIMENSIONS	L	985	mm
	W	780	mm
	H	830	mm
WEIGHT		145	kg

## CONTROL PANELS

### Monophase standard manual control panel

- Start/stop key
- Voltmeter
- Hourmeter
- Emergency stop button



- Circuit breaker
- differential protection for sockets
- Connector for automatic control panel

- No. 2 EEC socket 16 Amps 2P+T 230V