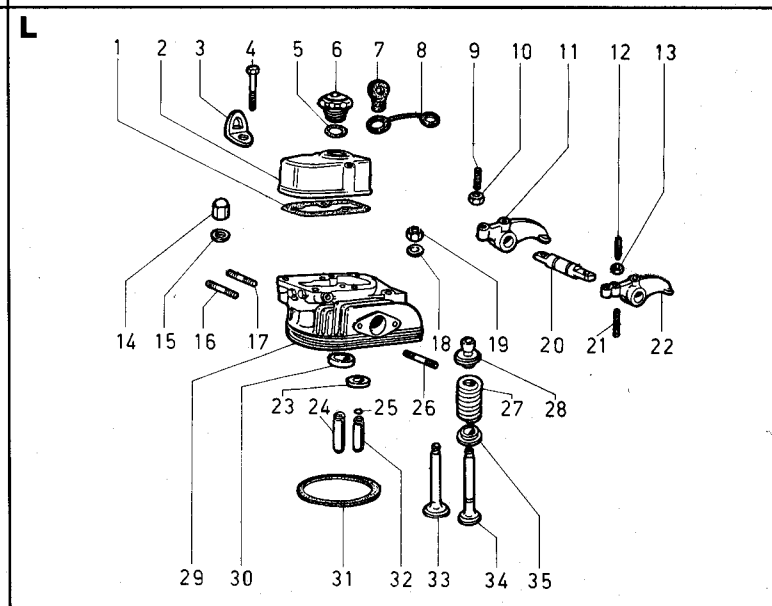
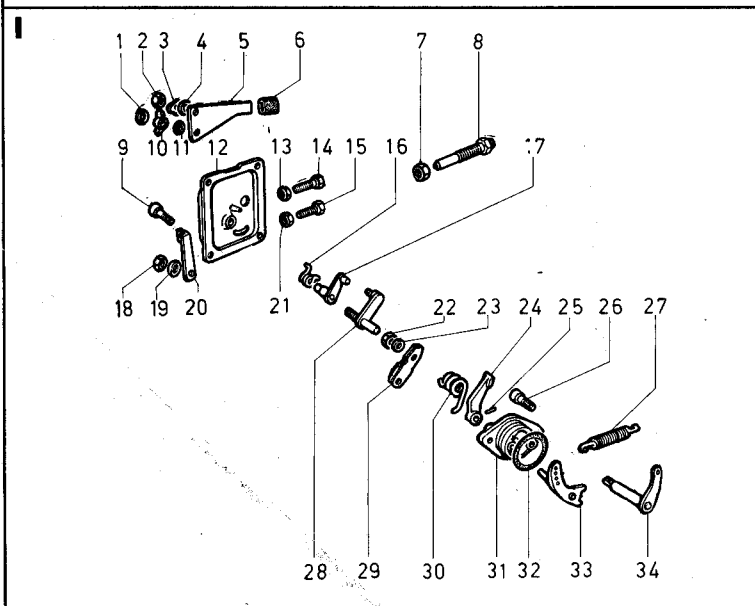
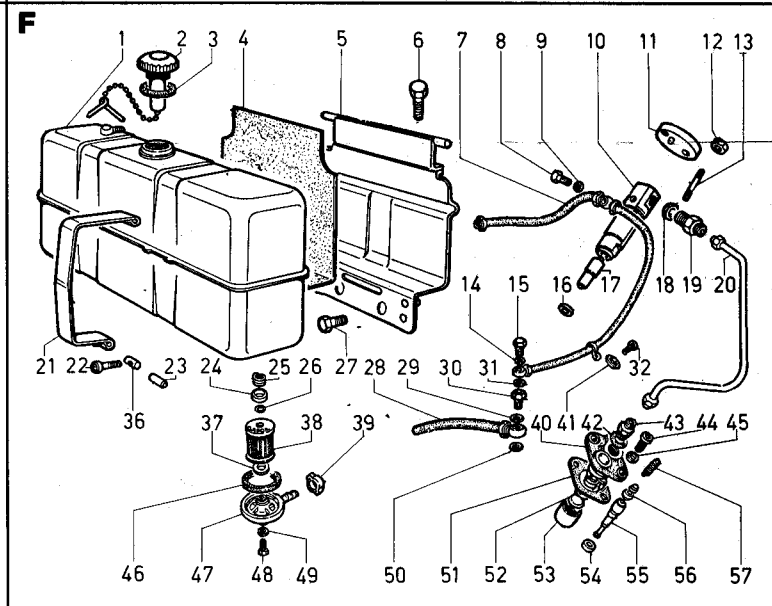
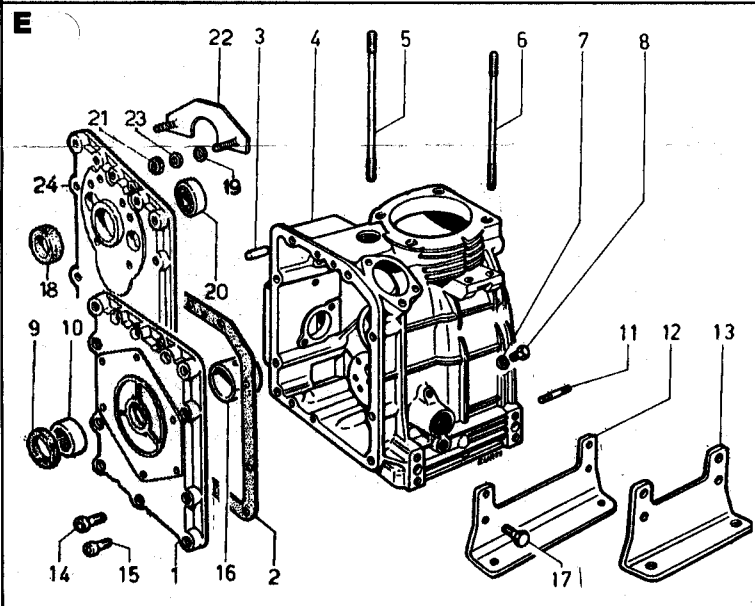
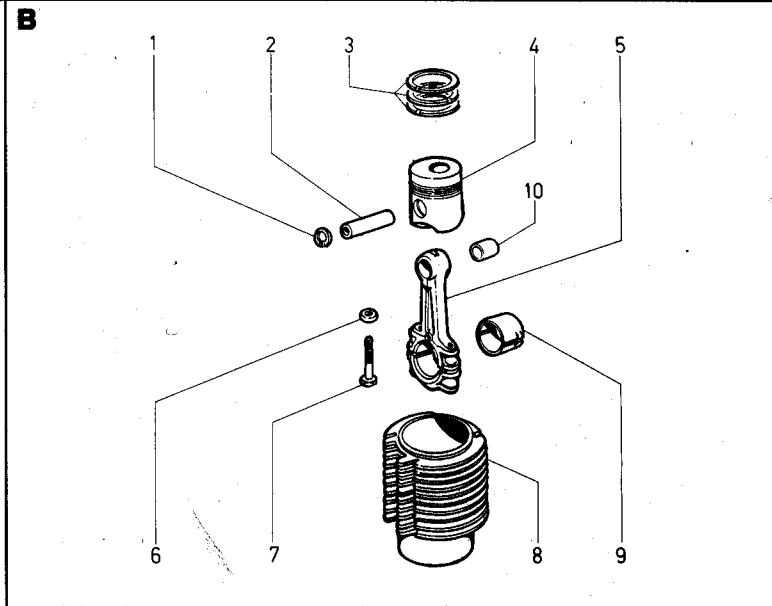
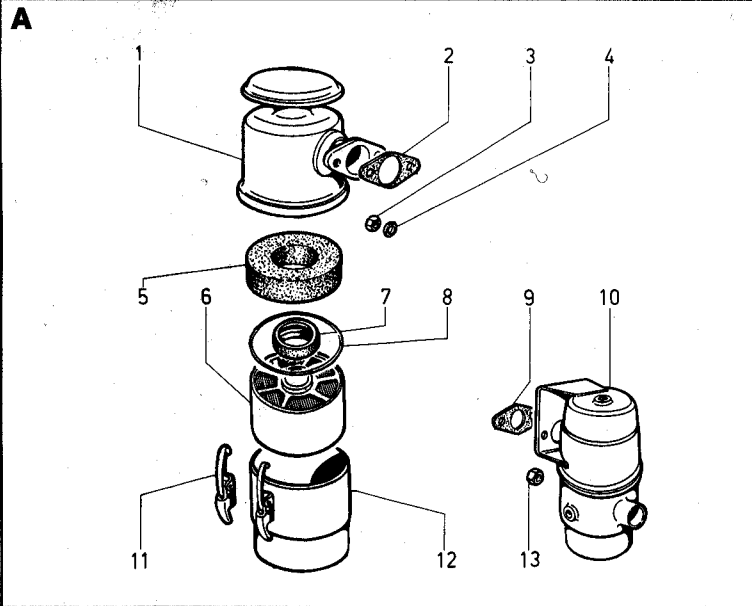


**RICAMBI PER MOTORE STANDARD.  
PER APPLICAZIONI SPECIALI  
CONSULTARE IL CATALOGO PRESSO I  
CENTRI ASSISTENZA E RICAMBI.**

**PIECES POUR DES MOTEURS  
STANDARD.  
POUR LES ADAPTATIONS CONSULTER  
LE CATALOGUE AUPRES DES AGENTS  
SERVICE.**

**SPARE PARTS FOR STANDARD  
ENGINE.  
FOR SPECIAL APPLICATIONS SEE  
MASTER CATALOG AT SERVICE  
CENTERS.**



**ERSATZTEILE FÜR STANDARD-MOTOREN.**  
**FÜR SONDERANFERTIGUNGEN SIEHE ERSATZTEILKATALOG BEI SERVICE WERKSTÄTTEN.**

**REPUESTOS PARA MOTORES STANDARD.**  
**PARA APLICACIONES VEASE CATALOGO EN LAS ESTACIONES SERVICE.**

**PEÇAS DE TROCA PARA MOTOR STANDARD.**  
**PARA APLICAÇÕES ESPECIAIS CONSULTAR O CATÁLOGO NOS CENTROS DE ASSISTÊNCIA E PEÇAS DE TROCA.**

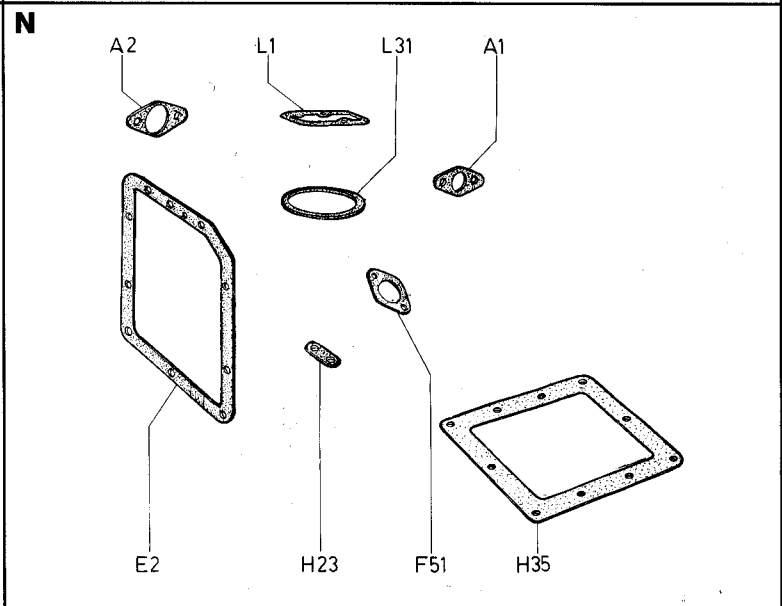
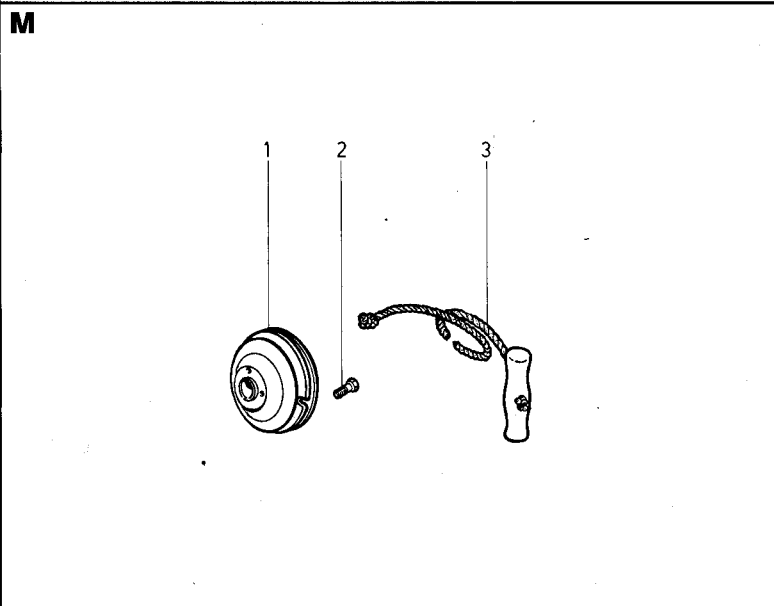
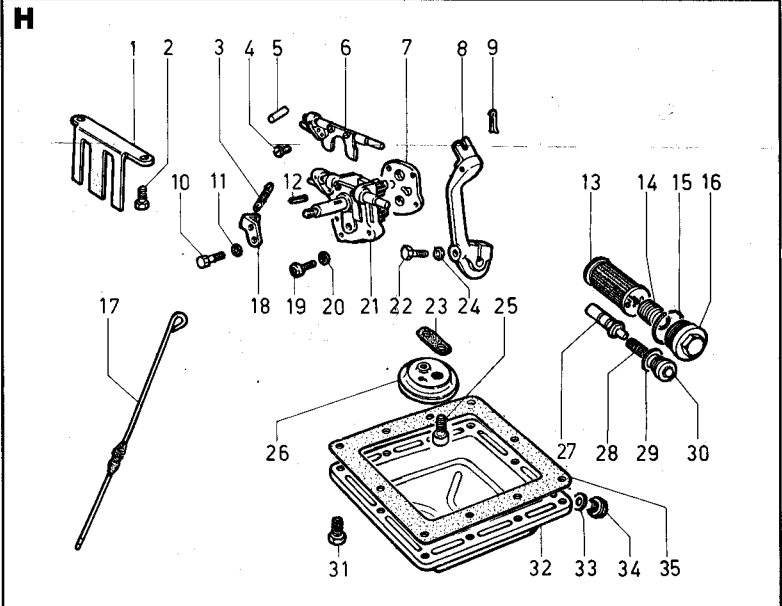
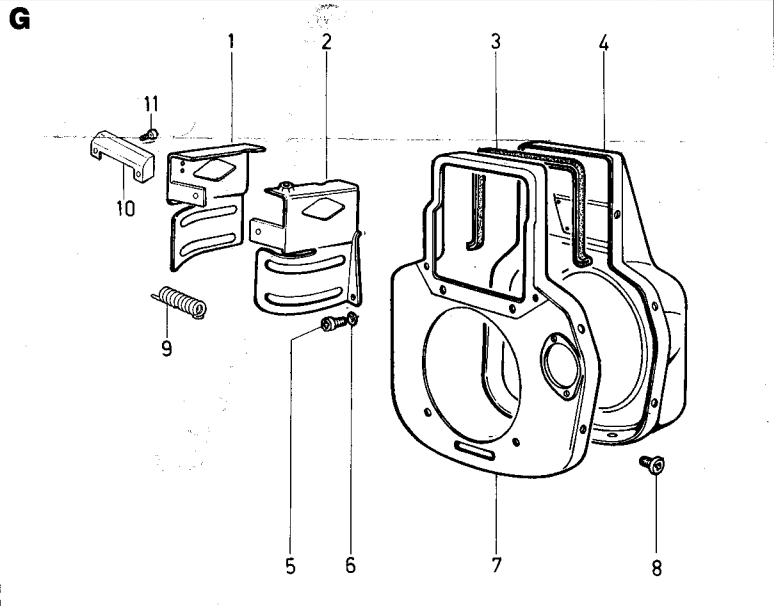
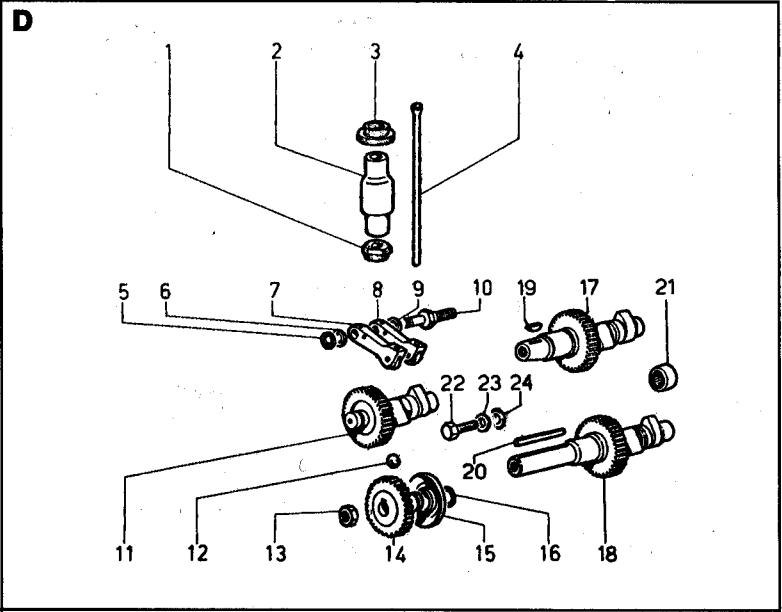
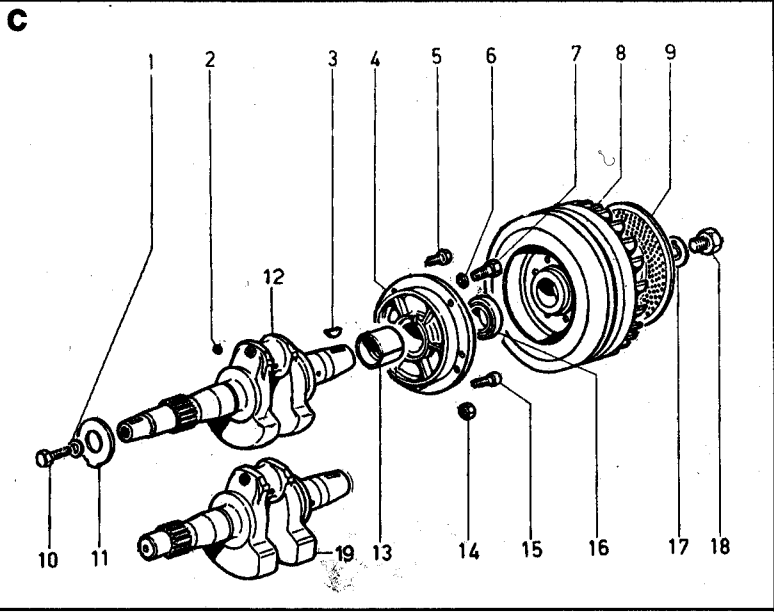
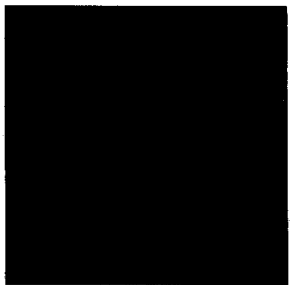


TAVOLA RICAMBI/SPARE PARTS TABLE/TABLEAU PIECES DETACHEES. 1.5302.412

\*\*\*\*\*  
 Settembre/September/Septembre 1992  
 \*\*\*\*\*

MOTORI/ENGINES/MOTEURS Gr.32

Colonna/Column/Colonna 1 = LDW 502 FOCS Versione/Version std. 727980  
 " " " 2 = LDW 602 FOCS " " " 727630

Vedi/See/Voir

Libretto Uso e Man./Use-Maint.booklet/Livret Emploi-Entret. .... 1.5302.310  
 Libretto Service/Service directory/Reseau S.A.V. .... 1.7968.002  
 Serie accessori/Accessory set/Jeu accessoires ..... 2830.8140.081

note/remarks/remarques

- F - alta movimentazione/fast moving part/haut mouvement.
- S - media movimentazione/medium moving part/moyen mouvement.
- D - bassa movimentazione/slow moving part/bas mouvement.
- E - ad esaurimento/exhausting part/piece en epuisement.
- N - particolare nuovo o fornito su richiesta/  
 -new part or part supplied upon request/  
 -piece nouvelle ou fournie sur demande.
- A - valido dal motore.../from eng.S.No.../A partir du moteur... \*
- B - valido fino al motore.../up to eng.S.No.../jusqu'au moteur...\*
- I - intercambiabile/interchangeable. \*
- \* (vedi Circolare Tecnica/see Service Letter/voir Circ.Techn.)
- V - stock per Off.Service/stock for Service Dealer/stock pour Stations Service
- C - stock vitale per Costruttori,Esportatori,Enti di Stato.  
 vital stock for Producers,Exporters,State Companies.  
 stock vital pour Constructeurs,Export.,Institut.de l'Etat.
- R - stock Rettif./Grinding Workshops stock/stock pour Usines de Rectification
- 10/50/2-q.ta minima fornibile/min.supplied q.ty/q.ta min.fournie.
- = gruppo completo/assembly/groupe complet.
- + componente del gruppo/assembly component/composant du groupe.

Serie guarnizioni banco/Serie anelli e guarnizioni testa/Serie anelli  
 Crankcase gasket set/Rings and gaskets set for cyl.head/O ring set  
 Jeu joints carter/Jeu de bagues et joints pour culasse/Jeu de bagues

vedi riquadro/see drawing/voir dessin N

Tipo mot./Eng.type/Type mot. Blocco motore/Short block/Bloc moteur

LDW 502 FOCS  
 LDW 602 FOCS

Descrizioni non impegnative/Subject to modifications/Modifications réservés  
 TECO/ATL/Assistenza Tecnica Lombardini/Settembre 1992

Riquadro/Drawing/Dessin A ASPIRAZIONE E SCARICO INTAKE AND EXHAUST ADMISSION ET ECHAPPEMENT	Riquadro/Drawing/Dessin G RAFFREDDAMENTO COOLING SYSTEM CIRCUIT DE REFROIDISSEMENT
Riquadro/Drawing/Dessin B CILINDRO, BIELLA E PISTONE CYLINDER, CONNECTING ROD AND PISTON SET CYLINDRE, BIELLE ET PISTON	Riquadro/Drawing/Dessin H CIRCUITO DI LUBRIFICAZIONE LUBRICATING SYSTEM CIRCUIT DE LUBRIFICATION
Riquadro/Drawing/Dessin C ALBERO A GOMITO, SUPPORTO E VOLANO CRANKSHAFT, FLYWH.SIDE SUPPORT AND FLYWHEEL VILEBREQUIN, PALIER ET VOLANT	Riquadro/Drawing/Dessin I COMANDI CONTROLS COMMANDES
Riquadro/Drawing/Dessin D DISTRIBUZIONE E REGOLATORE DI GIRI TIMING AND SPEED GOVERNOR DISTRIBUTION ET REGULATEUR DE VITESSE	Riquadro/Drawing/Dessin L TESTA, CAPPELLO BILANCIERI E VALVOLE CYLINDER HEAD, ROCKER ARM BOX AND VALVES CULASSE, COUV. CULBUTEURS ET SOUPAPES
Riquadro/Drawing/Dessin E BASAMENTO, PORTINA LATO DISTRIBUZIONE E PIEDI CRANKCASE, COVER GEAR AND MOUNTS CARTER MOTEUR, CARTER COTE DISTRIB., PIEDS	Riquadro/Drawing/Dessin M AVVIAMENTO STARTING DEMARREUR
Riquadro/Drawing/Dessin F CIRCUITO COMBUSTIBILE FUEL SYSTEM CIRCUIT CARBURANT	Riquadro/Drawing/Dessin N COMPOSIZIONE SERIE GUARNIZIONI/ANELLI GASKET/O RING SET COMPOSITION COMPOSITION SERIE JOINTS/BAGUES



Pos.	Matricola/Part No.	Note/Remarks	Q.ty/Eng.
A 1	8741.097 107 N A	supporto filtro/air cleaner support	1 1
A 2	9730.032 9 S 10	vite/screw M 8 X 1,25 X 45	2 2
A 3	9732.064 9 S 10	vite/screw M 8 X 1,25 X 30	1 1
A 4	4420.050 107 FV C 10	guarn.coll.aspir./inl.manifold joint	1 1
A 5	4420.068 106 FV C 10	guarn.coll.scarico/exh.manifold joint	2 2
A 6	2486.229 107 D C	collettore scarico/exhaust manifold	1 1
A 7	6780.028 9 D C 10	prigioniero/stud M 8 X 55 (67)	4 4
A 8	.....		
A 9	3240.095 9 FV C 10	dado/nut	4 4
A 11	9731.040 9 D A 10	vite/screw M 8 X 1,25 X 60	1 1
A 12	9305.081 107 N A	tubo drenaggio/blow-by pipe	1 1
A 13	3240.095 9 FV C 10	dado/nut M 8	2 2
A 14	3825.020 904 F C	flangia/flange	1 1
A 15	4420.015 904 FV C 10	guarnizione scarico/exhaust gasket	1 1
A 16	6780.008 9 FV C 10	prigioniero/stud M 8 X 20	2 2
A 17	1770.005 9 F 10	bullone/bolt M 8 X 22	1 1
A 18	3240.018 9 FV 10	dado/nut M 8	1 1
A 19	3815.013 2760 F C	flangia/flange	1 1
A 20	4500.079 276 FV C 10	guarnizione/gasket	1 1
A 21	5460.291 5600 N	marmitta/muffler	1 1
A 22	7565.007 9 F C 10	rondella/washer	1 1
A 23	7625.019 9 S 10	rondella/washer	1 1
A 24	9170.052 5600 N	terminale/muffler-end	1 1
A 25	2175.132 107 FV C	cartuccia aria/air cleaner element	1 1
A 26	2605.076 107 N	coperchio/cover	1 1
A 27	5055.055 107 N A	lamiera/panel	1 1
A 28	7325.009 107 N A	raccordo/union M 10 X 1	1 1
A 29	9700.100 107 N A	spia elettrica/el.clog.indicator	1 1
"	9700.101 107 N A	spia visiva/visual clog.indicator	1 1
A 30	9730.035 9 N 10	vite/screw M 8 X 1,15 X 65	4 4
B 1+	8211.141 107 FV C	serie segmenti/ring set std.	2 2
"	8211.142 107 F CR	" " " " +0,50	2 2
"	8211.143 107 F CR	" " " " +1,00	2 2
B 2	-6501.101 107 FVIC	PISTONE COMPLETO/PISTON SET std.	2
"	-6501.102 107 F ICR	" " " " +0,50	2
"	-6501.103 107 F ICR	" " " " +1,00	2
"	-6500.995 105 FVIC	" " " " std.	2
"	-6500.996 105 F ICR	" " " " +0,50	2
"	-6500.997 105 F ICR	" " " " +1,00	2
		(Pos. 1-2-4-5)	
B 3+	1630.020 107 FV CR	bronz. piede biella/small end bushing	2 2
B 4+	8480.087 107 S AC	spinotto/gudgeon pin	2 2
B 5+	1261.091 107 FVAC 10	anello seeger/snap ring	4 4
B 6	1640.101 107 FV C	br.t.biel./large end bushing std.	2 2
"	1640.102 107 FV CR	" " " bushing -0,25	2 2
"	1640.103 107 FV CR	" " " bushing -0,50	2 2
B 7	-1526.104 107 F C	BIELLA COMPLETA/CONNECTING ROD	2
"	-1526.105 105 F C	" " " "	2
		(Pos. 3-7-8)	
B 8+	1770.101 9 FV C 10	bullone/bolt	4 4
C 1+	2280.119 107 D C 10	chiavetta/key	1 1
C 2	-1050.605 105 D C	ALBERO GOMITO COMPL./CRANKSHAFT ASS.Y (Pos. 1-2-3-9)	1
C 3+	9080.132 9 SV C 10	tappo/plug	2 2
C 4	-1050.604 107 D C	ALBERO GOMITO COMPL./CRANKSHAFT ASS.Y (Pos. 1-3-4-9)	1
C 5+	2816.088 105 D(A)	corona/crown gear	1 1
C 6	-9880.690 105 N(A)	VOLANO con CORONA/FLYWHEEL with CROWN (Pos. 5-6)	1 1

Motore/Engine LDW FOCS 502

Versione/Version 727980

LDW FOCS 602

Versione/Version 727630



Pos.	Matricola/Part No.	Note/Remarks	Q.ty/Eng.
C 7	1780.097 107 D A 10	bullone/bolt M 10 X 35	5 5
C 8	1790.079 107 N 10	vite/screw	1 1
C 9+	8400.120 104 D 10	spina/pin	1 1
D 1	-4330.049 107 N	GRUPPO BILANC./ROCKER ARM ASSEMBLY (Pos. 1-2-3-4-5-6-7-11-12-13-16)	1 1
D 1+	1541.126 115 S C	bilanc.com.asp.-sc.comp./rocker arm	2 2
D 2+	9850.088 107 S C	vite registro bil.asp.-sc./adj.screw	4 4
D 3+	3240.008 9 FV 10	dado/nut	4 4
D 4+	9850.110 107 S C	vite reg. bil.pompa iniez./adj.screw	2 2
D 5+	3240.151 107 N 10	dado/nut	2 2
D 6+	1541.130 107 S C	bil.com.pompa in.comp./inj.pump arm	2 2
D 7+	8615.105 107 D C	supp. perno bil./rock.arm shaft supp.	3 3
D 8	7625.020 9 D C 10	rondella/washer	3 3
D 9	3240.033 9 FV 10	dado/nut	3 3
D 10	6800.088 107 D C 10	prigioniero/stud	3 3
D 11+	6045.086 107 S AC	perno bilanc./rocker arm shaft	1 1
D 12+	8430.061 9 D 10	spina/pin	1 1
D 13+	9080.182 9 N A 10	tappo/plug diam.10	2 2
D 15	1011.259 107 D C	albero camme/camshaft	1 1
"	1011.260 105 D C	" "	1 1
D 16+	1541.126 115 S C	bilanc.com.asp.-sc.comp./rocker arm	2 2
D 17	1970.140 107 N 10	bussola/sleeve	1 1
D 18	3580.018 107 D	eccentrico/cam	1 1
D 19	9730.294 107 N	vite/screw	1 1
D 20	1200.233 115 FV C 10	anello OR/rubber oil seal	1 1
D 21	3800.026 107 D	flangia/flange	1 1
D 22	9730.012 9 F C 10	vite/screw M 6 X 1 X 20	3 3
D 23	7090.012 107 D C	puleggia com.distr./contr.gear pulley	1 1
D 24	2440.297 107 FV C	cinghia dentata/cog belt	1 1
"	2440.298 105 FV C	" "	1 1
D 25+	1213.303 107 FV C 10	anello paraolio/seal ring	1 1
D 26	9730.010 9 S 10	vite/screw M 6 X 1 X 16	3 3
D 27	-2690.294 107 D	COPERCHIO REGOLATORE/GOVERNOR COVER (Pos. 25-27-28-29-30-31)	1 1
D 28+	1202.037 9 FV C 10	anello OR/rubber oil seal	1 1
D 29+	3001.066 107 D	cuscinetto/ball bearing	1 1
D 30+	6275.116 107 D	piastra/plate	1 1
D 31+	9800.061 9 F C 10	vite/screw M 6 X 1 X 16	3 3
D 32	8805.048 107 D C	supporto masse regol./weight support	1 1
D 33	6495.037 107 D	pistoncino tendicinghia/jockey	1 1
D 34	5401.081 107 N	manicotto regolatore/control sleeve	1 1
D 35	1585.085 107 N	boccola/sleeve	1 1
D 36	3110.127 107 D	cuscinetto reggispinta/thrust bearing	1 1
D 37	1257.047 107 SV C	anello arresto/stop ring	1 1
D 38	9820.142 107 N	vite/screw	1 1
D 39	7495.010 107 DV C	rondella/washer	1 1
D 41	3240.033 9 FV 10	dado/nut	1 1
D 42	6800.090 107 D C 10	prigioniero/stud	1 1
D 43	7495.010 107 DV C	rondella/washer	1 1
D 44	4110.009 107 D	galoppino tendicinghia/jockey pulley	1 1
E 1	9040.014 107 N	tappo/plug	1 1
E 2	4670.060 9 FV C 10	guarnizione in rame/copper joint	1 1
E 3	1970.140 107 N 10	bussola di riferimento/dowel	2 2
E 4	-1510.492 107 D C	BASAMENTO COMPOSTO/CRANKCASE (Pos. 4-16-20-21-22-23-29)	1 1
"	-1510.493 105 D C	BASAMENTO COMPOSTO/CRANKCASE (Pos. 4-16-20-21-22-23-29-30)	1 1
E 5	9730.009 9 D 10	vite/screw M 6 X 1 X 12	6 6
E 6	-2610.034 107 D	COPERCHIO DECANTATORE/DECANTER COVER (Pos. 6-12)	1 1
E 7	.....		
E 8	.....		
E 9	.....		
E 10	6370.504 107 N A	piastra/plate	1 1

Model/Engine LDW FOCS 502 Versione/Version 727980

" " LDW FOCS 602 Versione/Version 727630



Pos.	Matricola/Part No.	Note/Remarks	Q.ty/Eng.
E 11	.....		
E 12+	.....	vedi/see Pos. 6	
E 13	9730.010 9 S 10	vite/screw M 6 X 1 X 16	6 6
E 14	4431.135 107 FV C 10	guarnizione/gasket	1
E 15	9765.113 9 N 10	vite/screw M 12	1 1
E 16+	8990.022 9 N 10	tappo/plug	4 4
E 17	4501.100 107 FV C 10	guarnizione/joint	1 1
E 18	-3790.060 107 D	FLANGIA/FLANGE (Pos. 18-19)	1 1
E 19+	1213.339 107 FVIC 10	anello paraolio/seal ring	1 1
E 20+	9820.120 107 SV C	vite fiss.supp./fixing support screw	4 6
E 21+	1970.140 107 N 10	bussola di riferimento/dowel	4 6
E 22+	.....	vedi/see Pos. 4	
E 23+	.....	vedi/see Pos. 4	
E 24	1257.081 107 SV CR	anello reggisp./thrust washer std.	2 2
"	1257.082 107 SV CR	" " " +0,10	2 2
"	1257.083 107 SV CR	" " " +0,20	2 2
E 25	8400.108 107 D 10	spina/pin	2 2
E 26	1770.056 9 S AC 10	bullone/bolt M 8 X 1,25 X 18	9 9
E 27	6429.160 107 N A	piede anteriore/front side eng.mount	1 1
E 28	1790.037 9 N A	bullone/bolt M 12 X 1,75 X 20	2 2
E 29+	4400.054 107 FVAC 10	guarnizione/joint	4 4
E 30+	.....	vedi/see Pos. 4	
E 31	1611.138 107 FV C	bronz. di banco/support bearing std.	2 3
"	1611.139 107 FV CR	" " " " -0,25	2 3
"	1611.140 107 FV CR	" " " " -0,50	2 3
E 32	6429.250 107 N A	piede posteriore/rear side eng.mount	1 1
E 33	7645.006 9 N 10	rondella/washer	2 2
E 36	7645.007 9 N 10	rondella/washer	2 2
E 37	1770.004 9 F C 10	bullone/bolt M 8 X 1,25 X 20	2 2
F 1	9375.631 107 SV C	tubo mandata comb./delivery pipe	1 1
F 2	9730.238 107 SV C 10	vite fiss.tubo/fuel pipe fix.screw	4 4
F 3	4750.012 107 FV C	guarnizione tubi alim./del.pipe joint	1 1
F 4	3203.047 9 FV C 10	dado/nut	2 2
F 5	7625.010 9 FV C 10	rondella/washer	2 2
F 6	6780.049 9 D C 10	prigioniero/stud M 8 X 20	2
"	6780.133 107 D C 10	prigioniero/stud M 8 X 16	2
F 7	6585.068 107 FV C	pompa alimentazione/feed pump	1 1
F 8	1200.087 9 FV C 10	anello OR/O ring	1 1
F 9	7200.111 107 DV C	puntalino/drive rod	1 1
F 10	1200.052 9 FV C 10	anello OR/O ring	4 4
F 11	3240.018 9 FV 10	dado/nut	4 4
F 12	6780.135 107 D C 10	prigioniero/stud	4 4
F 13	7555.007 9 DV C 10	rondella/washer	4 4
F 14	1410.112 107 SV C	punteria/tapped	2 2
F 15	9865.213 107 SV C	vite di fasatura/adjusting screw	2 2
F 16	9680.031 107 FV C	valvolina rifiuto/bleeding valve	2 2
F 17	5801.274 107 SV C	molla per valvola di mandata/spring	2 2
F 18	9672.081 107 SVAC	valvola di mandata/delivery valve	2 2
F 20	6578.187 107 FVAC	pompante/plunger	2 2
F 21	4130.086 107 D	ghiera fissaggio pompante/plunger nut	2 2
F 22	8900.384 107 D AC	supporto punteria/push-rod support	2 2
F 23	5755.113 107 SV C	molla punteria/spring	2 2
F 24	7215.101 107 SVAC	punteria/push-rod	2 2
F 25	6590.236 107 FVAC	pompa-iniettore/nozzle-injection pump	2 2
F 26	2871.110 107 N A	corpo pompa iniettore/body	2 2
F 27	8335.142 107 D	spessore di taratura/adj.spacer 2,00	2 2
"	8335.143 107 D	spessore di taratura/adj.spacer 1,90	- -
"	8335.144 107 D	spessore di taratura/adj.spacer 1,80	- -
"	8335.145 107 D	spessore di taratura/adj.spacer 1,70	- -
"	8335.146 107 D	spessore di taratura/adj.spacer 1,60	- -
"	8335.147 107 D	spessore di taratura/adj.spacer 1,50	- -
"	8335.148 107 D	spessore di taratura/adj.spacer 1,40	- -
"	8335.149 107 D	spessore di taratura/adj.spacer 1,30	- -
"	8335.150 107 D	spessore di taratura/adj.spacer 1,20	- -
"	8335.151 107 D	spessore di taratura/adj.spacer 1,10	- -
"	8335.152 107 D	spessore di taratura/adj.spacer 1,00	- -
F 28	5625.011 107 SV C	molla di pressione/pression spring	2 2
F 29	1420.048 107 D	asta di comando/drive rod	2 2
F 30	3527.220 107 D	distanziale/spacer	2 2
F 31	7470.007 107 SV C	riempitore/filler	2 2
F 32	4760.015 271 FV C 10	guarnizione valvola/valve gasket	2 2
Motore/Engine	LDW FOCS 502	Versione/Version 727980	
"	LDW FOCS 602	Versione/Version 727630	





Pos.	Matricola/Part No.	Note/Remarks	Q.ty/Eng.
G 33+	9730.024 9 DV C 10	vite/screw M 8 X 1,25 X 16	2 2
G 34	9730.012 9 F C 10	vite/screw M 6 X 1 X 20	4 4
G 35	6275.145 107 D	piastrina/plate	1 1
G 36	9718.235 107 D A	ventilatore/blower	1 1
G 37	9730.016 9 FV C 10	vite/screw M 6 X 1 X 35	4 4
G 38	9732.074 9 S C 10	vite/screw M 8 X 1,25 X 20	4 4
G 39	7051.089 107 D C	puleggia vent.alt./blower driv.pulley	1 1
G 40	7051.087 107 D AC	"	1 1
G 41+	.....	vedi/see Pos. 18	
G 42	9730.024 9 DV C 10	vite/screw M 8 X 1,25 X 16	2 2
G 43	.....		
G 44	4670.061 9 FV C 10	guarnizione in rame/copper gasket	2 2
G 45	9195.030 565 D C	termostato/thermostat	1 1
G 46+	9305.038 107 SV C	tubo/pipe	1 1
G 47	9730.100 9 F 10	vite/screw M 8 X 1,25 X 25	2 2
G 48	1760.032 9 S C 10	bullone/bolt M 6 X 1 X 14	1 1
G 49	3630.146 107 N A 10	fascetta/clamp diam.25-40	6 6
G 50	3630.147 107 N A 10	fascetta/clamp diam.12-22	2 2
G 51	5365.069 107 N A	manicotto/shim	1 1
G 52	5365.070 107 N A	manicotto/shim	1 1
G 53	7350.084 107 N A	radiatore/water cooler	1 1
G 54	7625.007 9 S C 10	rondella/washer	3 3
G 55	8545.380 107 N A	staffa destra/right bracket	1 1
G 56	8545.381 107 N A	staffa sinistra/left bracket	1 1
G 57	8636.112 107 N A	supporto antivibr./vibrat.isolator	4 4
G 58	9265.137 107 N A	tirante destro/right brace	1 1
G 59	9265.141 107 N A	tirante sinistro/left brace	1 1
G 60	9305.073 107 N A	tubo collegamento/union pipe	1 1
G 61	9732.074 9 S AC 10	vite/screw M 8 X 20	2 2
G 62	9032.070 107 N	tappo/water cooler cap	1 1
G 63	5365.068 107 N A	manicotto/shim	1 1
G 64	9305.060 107 N A	tubo collegamento/union pipe	1 1
G 65	3527.324 107 N A	distanziale/spacer	2 2
G 66	3240.008 9 FVA 10	dado/nut M 6	4 4
G 67	3617.089 837 N A	fascetta/clamp	1 1
G 68	9040.012 183 N 10	tappo/plug	1 1
H 1	7090.014 107 D C	puleggia motrice/driving pulley	1 1
H 2+	1213.302 107 FV C 10	anello paraolio/seal ring	1 1
H 3+	4670.060 9 FV C 10	guarnizione/joint	1 1
H 4+	9015.005 107 S C	tappo/plug	1 1
H 5+	5625.008 107 SV C 10	molla/spring	1 1
H 6+	6495.045 107 D	pistoncino/drive rod	1 1
H 7	8400.106 107 D 10	spina/pin	1 1
H 8	8400.108 107 D 10	spina/pin	2 2
H 9+	9800.061 9 F C 10	vite/screw M 6 X 1 X 16	3 3
H 10	4431.130 107 FV C	guarnizione/joint	1 1
H 11+	.....	vedi/see Pos. 18	
H 12	1200.030 9 FV C 10	anello OR/rubber oil seal	1 1
H 13+	.....	vedi/see Pos. 18	
H 14	9732.064 9 S 10	vite/screw M 8 X 1,25 X 30	1 1
H 15	1200.225 107 FV C 10	anello OR/rubber oil seal	1 1
H 16	9485.186 107 S C	tubo ritorno olio/scavenge oil pipe	1 1
H 17	9732.074 9 S C 10	vite/screw M 8 X 1,25 X 20	6 6
H 18	-6605.075 107 FV C	POMPA OLIO COMPLETA/OIL PUMP ASS.Y (Pos. 2-3-4-5-6-9-11-13-18-19-20)	1 1
H 19+	1200.215 104 FV C 10	anello OR/O ring	1 1
H 20+	.....	vedi/see Pos. 18	
H 21	4580.156 107 FV C 10	guarnizione pompa olio/oil pump gask.	1 1
H 22	1200.034 9 FV C 10	anello OR/rubber oil seal	1 1
H 23	1400.189 107 D C	asta livello olio/oil dipstick	1 1
H 24	7500.018 271 FV C 10	rondella/washer	14 14
H 25	9730.009 9 D 10	vite/screw M 6 X 1 X 12	14 14
H 27	-6645.241 107 D C	PORTINA DI FONDO COMPLETA/OIL PAN (Pos. 27-28-29)	1 1
H 28+	1200.267 9 N A 10	anello OR/O ring	2 2
H 29+	9040.017 107 N A 10	tappo/plug M 12	2 2
H 30	1760.003 9 F 10	bullone/bolt M 6 X 1 X 12	1 1
H 31	7625.008 9 D C 10	rondella/washer	1 1
H 32	7265.021 115 SV C	raccordo cartuc./oil filter connect.	1 1

Motore/Engine LDW FOCS 502

Versione/Version 727980

" " LDW FOCS 602

Versione/Version 727630





Pos.	Matricola/Part No.	Note/Remarks	Q.ty/Eng.
H 33	2175.107 107 FV C	cartuccia olio/oil filter element	1 1
H 34	8430.085 107 N 10	spina elastica/lockpin	1 1
I 1	3203.074 107 SV C 10	dado/nut	1 1
I 2	4670.062 9 FV C 10	guarnizione in rame/copper joint	1 1
I 3	4190.109 107 D	ghiera/nut	1 1
I 4	6000.049 107 D C 10	pastiglia/nut	1 1
I 5	5200.815 107 D A	leva esterna com.accelerat./ext.lever	1 1
I 6	1380.041 107 D I	asta di collegamento/connecting rod	1 1
I 8	6320.048 115 D C	piastra/plate	2 2
I 9	9732.096 9 SV C 10	vite/screw M 3 X 0,5 X 6	4 4
I 11	4670.059 9 FV C 10	guarnizione per ghiera/ring gasket	1 1
I 12	8576.052 107 N	supplemento coppia/extra fuel device	1 1
I 14	1755.001 9 FV 10	bullone/bolt M 5 X 0,8 X 8	1 1
I 15	7626.017 9 N 10	rondella/washer	1 1
I 16	1200.052 9 FV C 10	anello OR/rubber oil seal	1 1
I 17	3240.008 9 FV 10	dado/nut	2 2
I 18	9180.011 70 S C 10	terminale/wire end	2 2
I 19	5801.203 107 SV C 10	molla supplemento/device spring	1 1
I 20	6370.238 107 D C 10	piastrina di ancoraggio/stop plate	1 1
I 21	7626.017 9 N 10	rondella/washer	1 1
I 22	3203.075 107 SV C 10	dado/nut	1 1
I 23	7626.037 9 N 10	rondella/washer	2 2
I 24	5655.185 107 SVIC	molla reg./gov. spring 3600 rpm	1 1
"	5655.186 187 SV C 10	" " 3000 rpm	
"	5655.187 187 SV C 10	" " 2400-2600 rpm	
"	5655.188 187 N	" " 1800 rpm	
"	5655.189 187 N	" " 1500 rpm	
I 25	3240.008 9 FV 10	dado/nut	2 2
I 26	1760.128 107 N 10	bullone registro/adjusting bolt	2 2
I 27	6110.101 107 D A	perno leva regolat./control lever pin	1 1
I 28	6000.049 107 D C 10	pastiglia/nut	1 1
I 29	9865.202 107 SV C 10	vite/screw M 3 X 0,5 X 10	2 2
I 30	1200.037 9 FV C 10	anello OR/rubber oil seal	1 1
I 31	1755.001 9 FV 10	bullone/bolt M 5 X 0,8 X 8	1 1
I 32	5200.414 107 D	leva esterna com.stop/external lever	1 1
I 33	3240.008 9 FV 10	dado/nut	1 1
I 34	5660.047 107 SV C	molla rich.leva stop/return spring	1 1
I 35	1200.051 9 FV C 10	anello OR/rubber oil seal	1 1
I 36	6275.114 107 D C 10	piastrina di fermo/stop plate	1 1
I 37	1760.128 107 N 10	bullone registro/adjusting bolt	1 1
I 38	3203.074 107 SV C 10	dado/nut	1 1
I 39	4670.062 9 FV C 10	guarnizione in rame/copper joint	1 1
I 41	5660.065 107 SVAC	molla rich.leva acc./return spring	1 1
I 42	1957.009 107 N 10	bussola/sleeve	1 1
I 43	1760.081 9 N 10	vite/screw	1 1
I 44	5200.674 107 D	leva interna com.acc./internal lever	1 1
I 45	5200.420 107 D	leva molla regol./contr. spring lever	1 1
I 46	6140.420 107 N 10	perno/journal	1 1
I 47	5200.641 107 N	leva comando regol./control lever	1 1
I 48	6760.044 9 N 10	prigioniero/stud M 6 X 7 (19)	1 1
I 50	1954.014 107 N	bussola/sleeve	1 1
I 51	5200.413 107 D	leva interna com.stop/internal lever	1 1
L 1	2125.256 107 S AC	cappello bilancieri/rocker arm cover	1
L 1	-2125.246 105 S AC	CAPPELLO BIL.COMP./ROCKER ARM COVER (Pos. 1-2-8-10-11-14-15-17-19-21)	1
L 2+	9580.051 107 D A	tubo/tube	1
L 3	9032.061 105 FV C	tappo rif.olio/oil filler cap	1 1
L 4	9730.012 9 FVAC 10	vite/screw M 6 X 1 X 20	9 9
L 5	8545.322 107 D	staffa di sollevamento/lifting brace	2 2
L 6	9400.098 107 N A	tubo drenaggio/drain pipe	1
L 7	3630.043 9 N A 10	fascetta/clamp d.14-24	4 2
L 8+	9080.132 9 SV C 10	tappo/plug diam. 6	1 1
"	9080.133 516 SV C 10	tappo/plug diam. 8	1 1
L 9	5365.030 107 D	manicotto/connection	1 1
L 10+	.....	vedi/see Pos. 14	
L 11+	.....	vedi/see Pos. 14	
L 12	.....		
L 13	3617.168 515 N A	fascetta/strip fixing	1

Motore/Engine LDW FOCS 502 Versione/Version 727980  
 " " LDW FOCS 602 Versione/Version 727630



Pos.	Matricola/Part No.	Note/Remarks	Q.ty/Eng.
L 14	-5066.220 105 D	LAMIERA SEPARATRICE COMPL./SEPARATOR (Pos. 10-11-14-17-19-21)	1
L 15+	.....	vedi/see Pos. 1	
L 16	5755.005 271 FV C 10	molla valvola/valve spring	4 4
L 17+	.....	vedi/see Pos. 14	
L 18	6410.017 271 F C 10	piattello con semic./spring retainer	4 4
L 19+	.....	vedi/see Pos. 14	
L 20+	4845.200 107 FVACR	guida valvola/valve guide std.	4 4
"	4845.220 107 FVACR	" " " +0,50	4 4
L 21+	.....	vedi/see Pos. 14	
L 22	4400.055 107 FVAC 10	guarnizione/joint	1 1
L 23	-9200.471 107 S AC	TESTA MOTORE COMPOSTA/CYLINDER HEAD (Pos. 20-23-25-30-31-36-37)	1 1
L 24	7625.130 107 SV C 10	rondella/washer	6 6
L 25+	8990.047 107 S C 10	tappo/plug	1 1
L 26	9820.119 105 SV C	vite speciale/special screw	6 6
L 27	7625.185 107 SV C 10	rondella/washer	4 4
L 28	9685.105 115 FV CR	valvola scarico/exhaust valve	2 2
L 29	9652.101 115 FV CR	valvola aspirazione/intake valve	2 2
L 30+	9765.111 9 D C 10	vite/screw M 8	2 2
L 31+	8990.022 9 N 10	tappo/plug	1 1
L 33	4130.096 107 D	ghiera/nut	2 2
L 34	6725.029 107 D C	precamera completa/precomb.chamber	2 2
"	6725.030 105 D C	" " "	2 2
L 35	4730.483 107 FVIC	guarniz. testa/head gasket 1,50 (0)	1 1
"	4730.484 107 FVIC	" " " 1,65 (1)	1 1
"	4730.485 107 FVIC	" " " 1,80 (2)	1 1
L 36+	8000.121 112 FV CR	sede valvola aspiraz./intake v.seat	2 2
L 37+	8000.122 112 FV CR	sede valvola scar./exhausting v.seat	2 2
L 38	9680.028 107 D AC	valvola pressione/pressure valve	1 1
L 40	.....		
L 41	5365.076 107 N A	tubo colleg./union pipe mm 74	1 1
"	5365.077 107 N A	" " " mm 93	1 1
L 42	5365.075 107 N A	tubo colleg./union pipe	1 1
L 43	9599.139 107 N A	tubo colleg./union pipe	1 1
L 44	4535.015 107 FVACR10	guarnizione/gasket	4 4
		(0) senza intagli/no semicircular cuts	
		(1) 1 intaglio/semicircular cut	
		(2) 2 intagli/semicircular cuts	
M 1	1780.027 9 N 10	bullone/bolt M 10 X 1,5 X 60	1 1
M 2	7625.020 9 D C 10	rondella/washer	1 1
M 3	9732.064 9 S 10	vite/screw M 8 X 1,25 X 30	3 3
M 4	3240.033 9 FV 10	dado/nut	1 1
M 5	8725.049 107 S C	supporto alternatore/alt.support	1 1
"	8725.050 105 S C	" " "	1 1
M 6	2100.058 107 FV C	candeletta/glow plug	2 2
M 7	2185.548 107 N	cavo colleg./connecting wire	1 1
M 8	1780.027 9 N 10	bullone/bolt M 10 X 1,5 X 60	1 1
M 9	7625.020 9 D C 10	rondella/washer	1 1
M 10	1157.070 107 SV C	alternatore/volt.alternator 12V-14A	1 1
M 11	6275.146 107 N	piastra/plate	1 1
M 12	5840.156 107 S	motorino avviamento/start.engine	1 1
M 13	9730.044 9 F 10	vite/screw M 10 X 1,5 X 25	2 2
M 14	6745.044 2760 FV C	pressostato/switch oil	1 1
M 15	4670.060 9 FV C 10	guarnizione in rame/copper gasket	1 1
M 16	5041.233 107 N	interruttore relè/electr.switch	1 1
M 17	6456.039 107 N	pignone/start.motor pinion	1 1
M 18	8150.022 107 N	serie ricambi/electr.spare parts set	1 1
M 19	.....		
M 20	3240.005 9 N 10	dado/nut	2 2
M 21	7626.066 9 N 10	rondella/washer	2 2
M 22	3240.004 9 FV C 10	dado/nut M 5	1 1
M 23	7565.003 9 S 10	rondella/washer	1 1
M 24	2185.810 107 N	cavo/wire	1 1
M 25	2145.014 276 FV C	cappuccio/rubber cap	1 1
M 26	7362.238 2830 FV C	regolatore tensione/voltage regul.	1 1
M 27	6740.153 2830 FV C 10	presa regol./regulator inlet Saprisa	1 1
"	6740.154 2830 SV C	" " " Ducati	1 1

Motore/Engine	LDW FOCS 502	Versione/Version	727980
"	LDW FOCS 602	Versione/Version	727630
"	"	"	"
"	"	"	"

32483 +  
A DATAFORE  
32484 +  
VARIAZIONI  
10030





